
IceWarp Unified Communications

Installation and Control in Linux

Version 12

IceWarp[®]



Published on 3/6/2017

Contents

IceWarp Server Installation and Control in Linux..... 4

Before Installation.....	4
Quick Installation Guide.....	5
Running.....	5
Installation Step-by-Step on Red Hat Enterprise Linux 5	6
Silent Installation.....	25
Using MySQL Database for IceWarp WebClient.....	26
New License Registration	28
Migration from Windows to Linux.....	31
webserver.dat Migration.....	31
Controlling IceWarp Server in Linux.....	32
Starting Server and/or Services.....	32
Stopping Server and/or Services.....	32
Service Icewarpd Functionality	32
Commands Table.....	32
IceWarp Server Administration.....	33
Installation of Spell Checker Dictionaries.....	34
Adjusting PHP.....	35
Running CentOS with Newer MySQL Versions (5.5.x and Later).....	36
Local Repository Creation	37
Upgrading IceWarp Server.....	38
Differences between Windows and Linux Versions.....	38
Security Enhanced Linux	39
Disabling SELinux.....	39
Configuring SELinux to Work with IceWarp Server	39
Miscellaneous	41
Document Preview.....	41
How to Uninstall	41

IceWarp Server Installation and Control in Linux

This document describes how to install IceWarp Server and control its services in Linux.

IceWarp supports Linux installations: RedHat/CentOS, Debian and Ubuntu. Since IceWarp v11.4.2 the latest versions are supported: RedHat 7, Debian 8 and Ubuntu 16.04.

Before Installation

1. Check available space on your disc, min. 500 MB is required.
2. Make sure the system has **utf8** locale set. You can do this by running the following command:

```
locale (as root)
```

It has to end with the **.utf8** string. If not, please refer to the system documentation and change the locale appropriately.

NOTE: The Turkish locale (tr_TR) is not supported because of a bug in PHP. It is recommended to use (en_US) instead. It has been tested with a Turkish client – works well.

3. Stop and remove from the **init** process every program which can use any network port required for the server. For example **sendmail** listens on the port 25 and the SMTP service would not be able to start.
4. You can create a new user for the server, for example "icewarp". This user has lower privileges than root. When created and set for installation, the server – after initialization – drops root privileges and runs under this user.

NOTE: Even in this case, it is necessary to launch the server as root. It is not possible to launch the server from any account with lower privileges.

5. Check firewall – Linux firewall (*iptables*) is enabled on many distributions by default. The default configurations block for example remote HTTP connections to the server. Thus remote console cannot be used, because it uses HTTP port for communication. The IceWarp setup does not add any rule to your *iptables* configuration.
6. Check SELinux – IceWarp server comes with its own dynamic libraries which are placed in the IceWarp installation directory. When the SELinux security module is installed and is in the enforcing mode, it can prevent IceWarp Server from loading these libraries causing that IceWarp does not work. SELinux is installed and enforcing by default on some distributions.

You can easily "disable" SELinux by switching it to the permissive mode by the following command:

```
setenforce 0
```

If you want to use SELinux in the enforce mode on your system, you need to configure it yourself to allow IceWarp server to operate correctly.

7. On genuine Red Hat servers (not CentOS), it is needed to add so called **optional repository** to have LibreOffice packages available. LibreOffice is needed for document conversions (anything → PDF).

IceWarp Server can work without this feature and Linux installer allows not to install LibreOffice at all. But if you want to use document conversions on a genuine RHEL, you need LibreOffice and have to add this optional repository. It is described in RedHat documents – it can be easily found on the Internet.

Quick Installation Guide

The installation package is in .tar.gz format. The latest package can be always found on IceWarp web site <http://www.icewarp.com>, in the **Downloads** section.

Example: IceWarpServer-10.4.0_RHEL5.tar.gz

1. Extract the package:

```
[linux]$ tar -xzf IceWarpServer-10.4.0_RHEL5.tar.gz
```
2. Chdir to the created directory:

```
[linux]$ cd IceWarpServer-10.4.0_RHEL5
```
3. Start the installation:

```
[linux]$ ./install.sh
```
4. Follow the onscreen instructions.

Running

The IceWarp Server uses database for storing informations for accounts, antispam, groupware, WebClient cache, ActiveSync, directory cache and spam reports.

Default databases are:

- Accounts: uses file system
- Antispam, groupware, WebClient cahe, ActiveSync, directory cache and spam reports: SQLite

You can change database type in wizard (launch **wizard.sh**) or using the Remote Administration tool for Windows or using **WebAdmin**.

Also UnixODBC is supported.

The server was tested with UnixODBC and Oracle.

Webserver listens on ports 80 and 32000 (443 and 32001 for SSL).

Default http addresses are:

- WebClient: <http://localhost/webmail>
- WebAdmin: <http://localhost/admin>
- RPC: <http://localhost/RPC/>

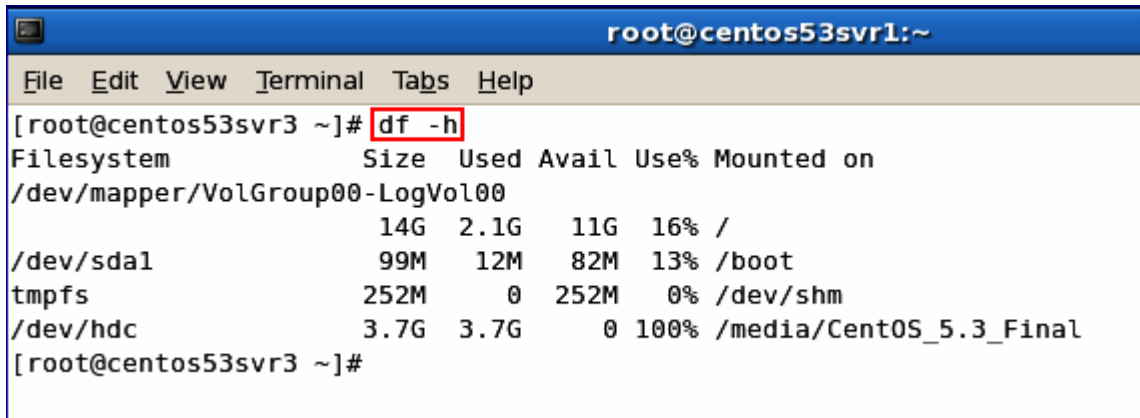
If you have problem running the server, please check log files in the **.<install_dir>/logs** directory, errors regarding unsuccessful port binding or loading of required libraries will be logged here.

Installation Step-by-Step on Red Hat Enterprise Linux 5

BE AWARE: Setup has to be executed as root **logged in login shell**. This can be achieved by logging directly as root or by switching to root via `su -` (the minus is important). (User can also switch correctly using `su -1` or `su --login`).

To install IceWarp Server on Red Hat Enterprise Linux (RHEL) 5 (with MySQL as a storage), follow these steps:

1. Check available disk space in volumes using `df -h`. At least 500MB is required (for installation, not including future user data).



```
root@centos53svr1:~
File Edit View Terminal Tabs Help
[root@centos53svr3 ~]# df -h
Filesystem      Size  Used Avail Use% Mounted on
/dev/mapper/VolGroup00-LogVol00
                14G  2.1G   11G  16% /
/dev/sda1        99M   12M   82M  13% /boot
tmpfs            252M     0  252M   0% /dev/shm
/dev/hdc         3.7G  3.7G     0 100% /media/CentOS_5.3_Final
[root@centos53svr3 ~]#
```

2. Check used ports running `netsat -nap`. Refer to the **System Node** guide – **Service Ports** chapter, to check what ports IceWarp Server uses.

Check for services startup's using `chkconfig --list | grep on`.

```

root@centos53svr1:~
File Edit View Terminal Tabs Help
[root@centos53svr2 ~]# chkconfig --list | grep on
acpid          0:off 1:off 2:on 3:on 4:on 5:on 6:off
anacron        0:off 1:off 2:on 3:on 4:on 5:on 6:off
apmd           0:off 1:off 2:on 3:on 4:on 5:on 6:off
atd            0:off 1:off 2:off 3:on 4:on 5:on 6:off
auditd         0:off 1:off 2:on 3:on 4:on 5:on 6:off
autofs         0:off 1:off 2:off 3:on 4:on 5:on 6:off
.
.
network        0:off 1:off 2:on 3:on 4:on 5:on 6:off
nfslock        0:off 1:off 2:off 3:on 4:on 5:on 6:off
pcscd          0:off 1:off 2:on 3:on 4:on 5:on 6:off
portmap        0:off 1:off 2:off 3:on 4:on 5:on 6:off
readahead_early 0:off 1:off 2:on 3:on 4:on 5:on 6:off
readahead_later 0:off 1:off 2:off 3:off 4:off 5:on 6:off
restorecond    0:off 1:off 2:on 3:on 4:on 5:on 6:off
rpcgssd        0:off 1:off 2:off 3:on 4:on 5:on 6:off
rpcidmapd      0:off 1:off 2:off 3:on 4:on 5:on 6:off
sendmail       0:off 1:off 2:on 3:on 4:on 5:on 6:off
setroubleshoot 0:off 1:off 2:off 3:on 4:on 5:on 6:off
smartd         0:off 1:off 2:on 3:on 4:on 5:on 6:off
sshd           0:off 1:off 2:on 3:on 4:on 5:on 6:off
syslog         0:off 1:off 2:on 3:on 4:on 5:on 6:off
wdaemon        0:off 1:off 2:off 3:off 4:off 5:off 6:off
xfs            0:off 1:off 2:on 3:on 4:on 5:on 6:off
xinetd         0:off 1:off 2:off 3:on 4:on 5:on 6:off
yum-updatesd   0:off 1:off 2:on 3:on 4:on 5:on 6:off
[root@centos53svr3 ~]#

```

- Turn off **Auto-Start** for clashing services, ie. Sendmail using `chkconfig --level 0123456 sendmail off`.

```

root@centos53svr1:~
File Edit View Terminal Tabs Help
[root@centos53svr3 ~]# chkconfig --list sendmail
sendmail       0:off 1:off 2:on 3:on 4:on 5:on 6:off
[root@centos53svr3 ~]# chkconfig --level 0123456 sendmail off
[root@centos53svr3 ~]# chkconfig --list sendmail
sendmail       0:off 1:off 2:off 3:off 4:off 5:off 6:off
[root@centos53svr3 ~]#

```

- Stop clashing services, ie. Sendmail using `/etc/rc.d/init.d/sendmail stop`.

```
root@centos53svr1:~
File Edit View Terminal Tabs Help
[root@centos53svr3 ~]# chkconfig --list sendmail
sendmail      0:off  1:off  2:on   3:on   4:on   5:on   6:off
[root@centos53svr3 ~]# chkconfig --level 0123456 sendmail off
[root@centos53svr3 ~]# chkconfig --list sendmail
sendmail      0:off  1:off  2:off  3:off  4:off  5:off  6:off
[root@centos53svr3 ~]# /etc/rc.d/init.d/sendmail stop
Shutting down sm-client:          [  OK  ]
Shutting down sendmail:          [  OK  ]
[root@centos53svr3 ~]# █
```

NOTE: On other distributions, the tool for managing services startup can differ and clashing applications can also differ:

For Debian 6 (support ended with 11.4.0.0 release):

```
update-rc.d -f exim4 remove
```

```
/etc/init.d/exim4 stop
```

For Centos 6.2:

```
ckconfig --level 0123456 postfix off
```

```
/etc/rc.d/init.d/postfix stop
```

5. Optionally, create a user for IceWarp Server installation (both username and password are case sensitive).

```
root@centos53svr1:~
File Edit View Terminal Tabs Help
[root@centos53svr3 ~]# adduser -m -c IceWarp IceWarp
[root@centos53svr3 ~]# passwd IceWarp
Changing password for user IceWarp.
New UNIX password:
Retype new UNIX password:
passwd: all authentication tokens updated successfully.
[root@centos53svr3 ~]# █
```

6. If not already installed, install MySQL. In the case you do not want to use MySQL now, proceed to the step # 11.


```

root@centos53svr1:~
File Edit View Terminal Tabs Help
[root@centos53svr3 ~]# adduser -m -c IceWarp IceWarp
[root@centos53svr3 ~]# passwd IceWarp
Changing password for user IceWarp.
New UNIX password:
Retype new UNIX password:
passwd: all authentication tokens updated successfully.
[root@centos53svr3 ~]# yum list mysql-server
Loaded plugins: fastestmirror
Loading mirror speeds from cached hostfile
 * base: centosq2-msync-dvd.centos.org
 * updates: centosq2-msync-dvd.centos.org
 * addons: centosk.centos.org
 * extras: centoso3.centos.org
Available Packages
mysql-server.i386 5.0.45-7.el5
[root@centos53svr3 ~]# yum install mysql-server

```

```

root@centos53svr1:~
File Edit View Terminal Tabs Help
Resolving Dependencies
--> Running transaction check
--> Package mysql-server.i386 0:5.0.45-7.el5 set to be updated
--> Processing Dependency: perl-DBD-MySQL for package: mysql-server
--> Running transaction check
--> Package perl-DBD-MySQL.i386 0:3.0007-2.el5 set to be updated
--> Finished Dependency Resolution

Dependencies Resolved

-----
Package Arch Version Repository Size
-----
Installing:
mysql-server i386 5.0.45-7.el5 base 9.7 M
Installing for dependencies:
perl-DBD-MySQL i386 3.0007-2.el5 base 148 k
-----

Transaction Summary
-----
Install 2 Package(s)
Update 0 Package(s)
Remove 0 Package(s)

Total download size: 9.8 M
Is this ok [y/N]: y
Downloading Packages:
(1/2): perl-DBD-MySQL-3.0007-2.el5.i386.rpm | 148 kB 00:02
(2/2): mysql-server-5.0.45-7.el (9%) 8% [= ] 112 kB/s | 800 kB 01:20 ETA

```

```
root@centos53svr1:~
File Edit View Terminal Tabs Help
Transaction Summary
-----
Install      2 Package(s)
Update       0 Package(s)
Remove       0 Package(s)

Total download size: 9.8 M
Is this ok [y/N]: y
Downloading Packages:
(1/2): perl-DBD-MySQL-3.0007-2.el5.i386.rpm | 148 kB   00:02
(2/2): mysql-server-5.0.45-7.el5.i386.rpm  | 9.7 MB   01:04
-----
Total                                           142 kB/s | 9.8 MB   01:10
warning: rpmts_HdrFromFdno: Header V3 DSA signature: NOKEY, key ID e8562897
Importing GPG key 0xE8562897 "CentOS-5 Key (CentOS 5 Official Signing Key) <centos-5-key@centos.org>" from /etc/pk1/rpm-gpg/RPM-GPG-KEY-CentOS-5
Is this ok [y/N]: y
Running rpm_check_debug
Running Transaction Test
Finished Transaction Test
Transaction Test Succeeded
Running Transaction
  Installing      : perl-DBD-MySQL                [1/2]
  Installing      : mysql-server                  [2/2]

Installed: mysql-server.i386 0:5.0.45-7.el5
Dependency Installed: perl-DBD-MySQL.i386 0:3.0007-2.el5
Complete!
[root@centos53svr3 ~]#
```

7. Set MySQL to **Auto-Start** using **chkconfig mysqld on** and then start the service immediately using **service mysqld start**.

```
root@centos53svr1:~
File Edit View Terminal Tabs Help
[root@centos53svr1 ~]# chkconfig mysqld on
[root@centos53svr1 ~]# service mysqld start
Initializing MySQL database: Installing MySQL system tables...
OK
Filling help tables...
OK

To start mysqld at boot time you have to copy
support-files/mysql.server to the right place for your system

PLEASE REMEMBER TO SET A PASSWORD FOR THE MySQL root USER !
To do so, start the server, then issue the following commands:
/usr/bin/mysqladmin -u root password 'new-password'
/usr/bin/mysqladmin -u root -h centos53svr1.vmware password 'new-password'
See the manual for more instructions.
You can start the MySQL daemon with:
cd /usr ; /usr/bin/mysqld_safe &

You can test the MySQL daemon with mysql-test-run.pl
cd mysql-test ; perl mysql-test-run.pl

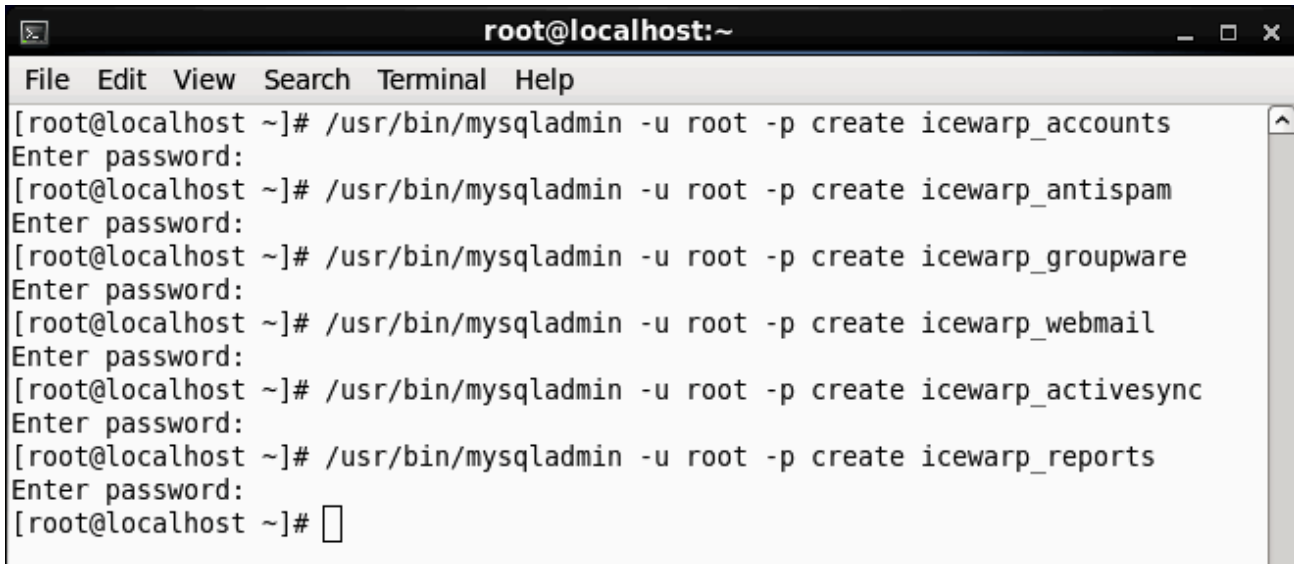
Please report any problems with the /usr/bin/mysqlbug script!

The latest information about MySQL is available on the web at
http://www.mysql.com
Support MySQL by buying support/licenses at http://shop.mysql.com
Starting MySQL: [ OK ]
[root@centos53svr1 ~]#
```

8. Set MySQL root password.

```
root@centos53svr1:~
File Edit View Terminal Tabs Help
[root@centos53svr1 ~]# /usr/bin/mysqladmin -u root password 'mysql'
[root@centos53svr1 ~]# /usr/bin/mysqladmin -u root -p create icewarp_accounts
Enter password:
[root@centos53svr1 ~]# /usr/bin/mysqladmin -u root -p create icewarp_antispam
Enter password:
[root@centos53svr1 ~]# /usr/bin/mysqladmin -u root -p create icewarp_groupware
Enter password:
[root@centos53svr1 ~]# /usr/bin/mysqladmin -u root -p create icewarp_webmail
Enter password:
[root@centos53svr1 ~]# /usr/bin/mysqladmin -u root -p create icewarp_loganalyzer
Enter password:
[root@centos53svr1 ~]# █
```

9. Create databases for IceWarp Server in MySQL.



```
root@localhost:~
File Edit View Search Terminal Help
[root@localhost ~]# /usr/bin/mysqladmin -u root -p create icewarp_accounts
Enter password:
[root@localhost ~]# /usr/bin/mysqladmin -u root -p create icewarp_antispam
Enter password:
[root@localhost ~]# /usr/bin/mysqladmin -u root -p create icewarp_groupware
Enter password:
[root@localhost ~]# /usr/bin/mysqladmin -u root -p create icewarp_webmail
Enter password:
[root@localhost ~]# /usr/bin/mysqladmin -u root -p create icewarp_activesync
Enter password:
[root@localhost ~]# /usr/bin/mysqladmin -u root -p create icewarp_reports
Enter password:
[root@localhost ~]#
```

It is recommended to add the character set option to the create command.

E. g.:

```
/usr/bin/mysql -u root -p create database icewarp_accounts DEFAULT CHARACTER SET utf8 COLLATE utf8_general_ci
/usr/bin/mysql -u root -p create database icewarp_antispam DEFAULT CHARACTER SET utf8 COLLATE utf8_general_ci
etc.
```

*NOTE: You can specify the collation set for different languages. E.g. for Swedish: ... **utf8_swedish_ci***

Follow this address to verify your collation set for proper MySQL sorting:

<http://www.collation-charts.org/mysql60/>

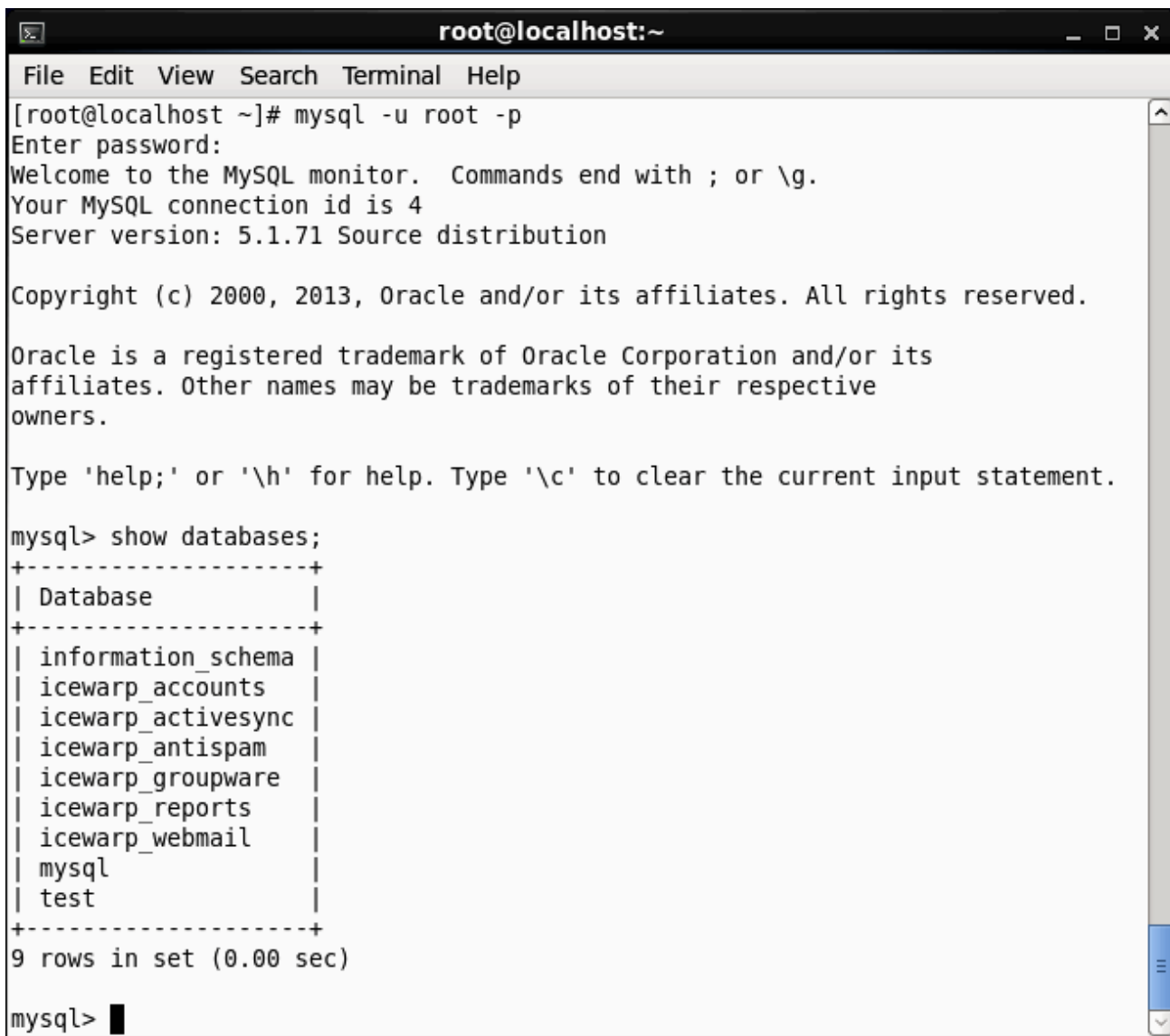
*NOTE: InnoDB should be used as MySQL engine. This can be done by adding the following line into the **/etc/my.cnf** file:*

```
default-storage-engine=INNODB
```

NOTE: MySQL should be configured after installation by an experienced administrator. When MySQL will be used for WebClient cache on a big server, admin must expect, that the database will still grow and will need gigabytes of space.

*NOTE: On some distributions, old MySQL is distributed by default. On RHEL, we recommend to install a newer MySQL server for example from EPEL repository. See the **Running CentOS with Newer MySQL Versions (5.5.x and Later)** chapter.*

10. Verify tables created in MySQL.



```
root@localhost:~
File Edit View Search Terminal Help
[root@localhost ~]# mysql -u root -p
Enter password:
Welcome to the MySQL monitor.  Commands end with ; or \g.
Your MySQL connection id is 4
Server version: 5.1.71 Source distribution

Copyright (c) 2000, 2013, Oracle and/or its affiliates. All rights reserved.

Oracle is a registered trademark of Oracle Corporation and/or its
affiliates. Other names may be trademarks of their respective
owners.

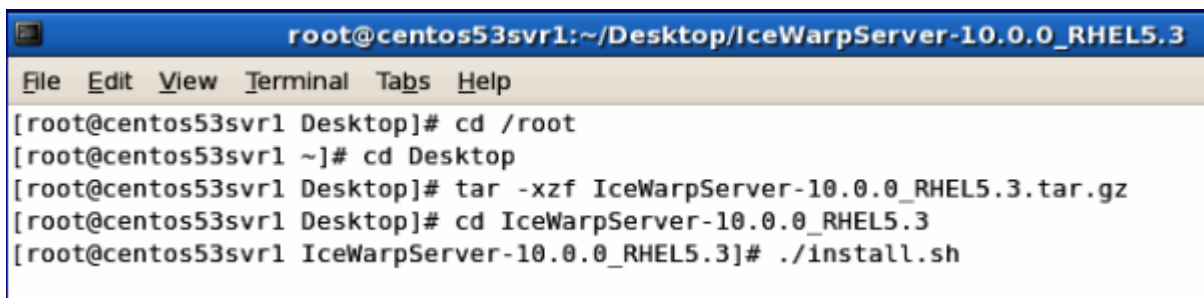
Type 'help;' or '\h' for help. Type '\c' to clear the current input statement.

mysql> show databases;
+-----+
| Database                |
+-----+
| information_schema      |
| icewarp_accounts        |
| icewarp_activesync      |
| icewarp_antispam        |
| icewarp_groupware       |
| icewarp_reports         |
| icewarp_webmail         |
| mysql                   |
| test                    |
+-----+
9 rows in set (0.00 sec)

mysql> █
```

11. Begin IceWarp Server installation by running `install.sh` with root privileges.

NOTE: When IceWarp Server is already installed, installer will detect it and offer whether you want to upgrade. If you say no, the old installation can be reinstalled – installer will delete the old installation (whole directory) and then install the new one in this mode.



```
root@centos53svr1:~/Desktop/IceWarpServer-10.0.0_RHEL5.3
File Edit View Terminal Tabs Help
[root@centos53svr1 Desktop]# cd /root
[root@centos53svr1 ~]# cd Desktop
[root@centos53svr1 Desktop]# tar -xzf IceWarpServer-10.0.0_RHEL5.3.tar.gz
[root@centos53svr1 Desktop]# cd IceWarpServer-10.0.0_RHEL5.3
[root@centos53svr1 IceWarpServer-10.0.0_RHEL5.3]# ./install.sh
```

12. License Acceptation

License is displayed on the screen, but usually it scrolls out. The text can be also found in the LICENSE file within the installation package. To accept the license, press *Enter*. If you do not accept, terminate the installer by pressing *Ctrl-C*.

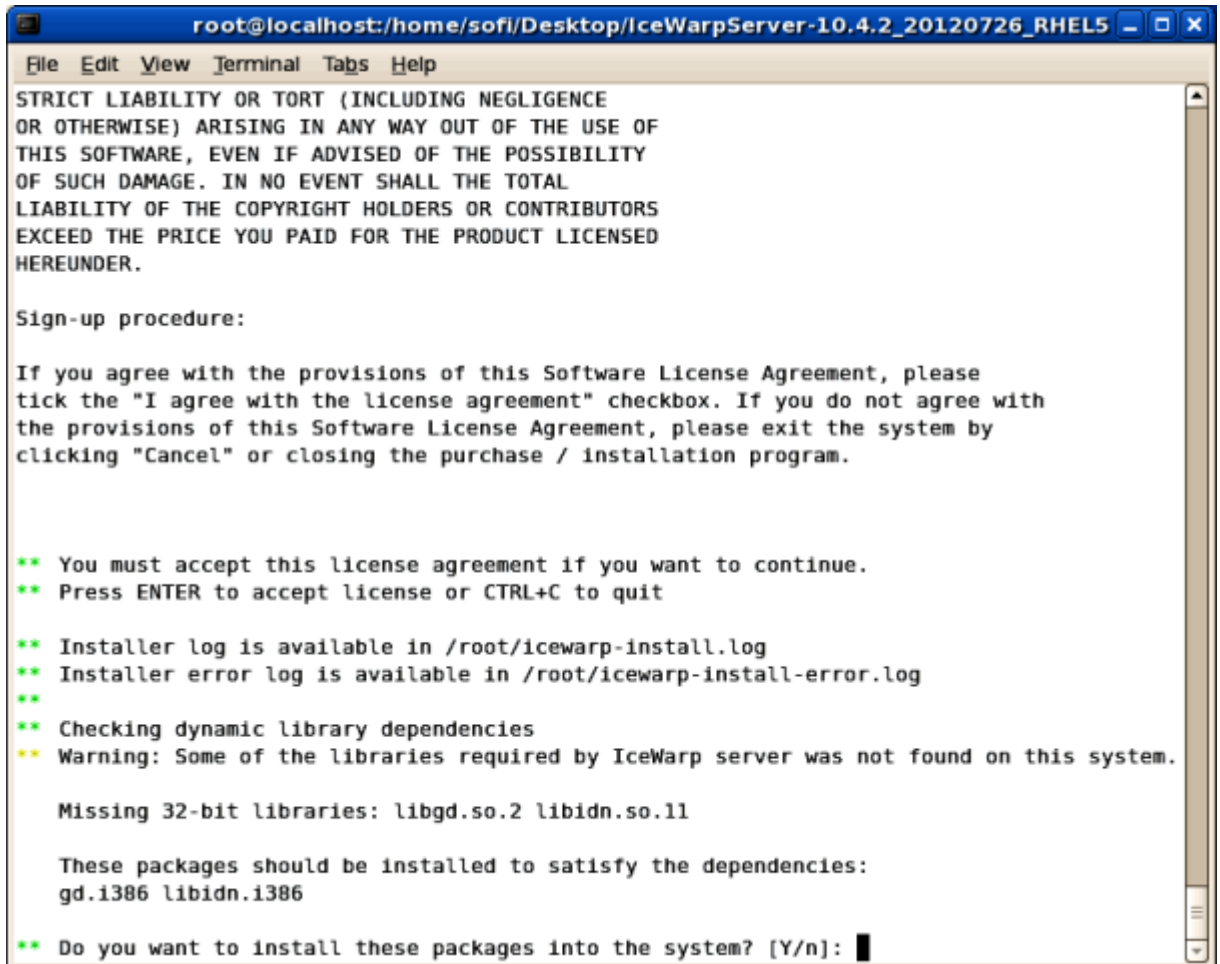
13. Dependencies Check

Dynamic library dependencies are now checked by the installer. It checks dependencies of all binaries included in IceWarp Server, i.e. IceWarp Server itself, embedded LDAP Server and all Purple plugins. When setup detects any librerie(s) are missing, it prints them out together with information, which packages contain missing libraries.

You have the possibility to let the setup run the package manager and install suggested packages. The dependencies are checked again after installation, whether they are installed or still missing.

You can also reject installation of detected dependencies and setup will continue. However, some binaries coming with IceWarp Server will not execute until you install the libraries manually.

NOTE: 32bit libraries are installed, which sometimes causes a conflict with already installed 64bit libraries. System update is often the solution of this problem.



```
root@localhost:/home/sofi/Desktop/IceWarpServer-10.4.2_20120726_RHEL5
File Edit View Terminal Tabs Help
STRICT LIABILITY OR TORT (INCLUDING NEGLIGENCE
OR OTHERWISE) ARISING IN ANY WAY OUT OF THE USE OF
THIS SOFTWARE, EVEN IF ADVISED OF THE POSSIBILITY
OF SUCH DAMAGE. IN NO EVENT SHALL THE TOTAL
LIABILITY OF THE COPYRIGHT HOLDERS OR CONTRIBUTORS
EXCEED THE PRICE YOU PAID FOR THE PRODUCT LICENSED
HEREUNDER.

Sign-up procedure:

If you agree with the provisions of this Software License Agreement, please
tick the "I agree with the license agreement" checkbox. If you do not agree with
the provisions of this Software License Agreement, please exit the system by
clicking "Cancel" or closing the purchase / installation program.

** You must accept this license agreement if you want to continue.
** Press ENTER to accept license or CTRL+C to quit

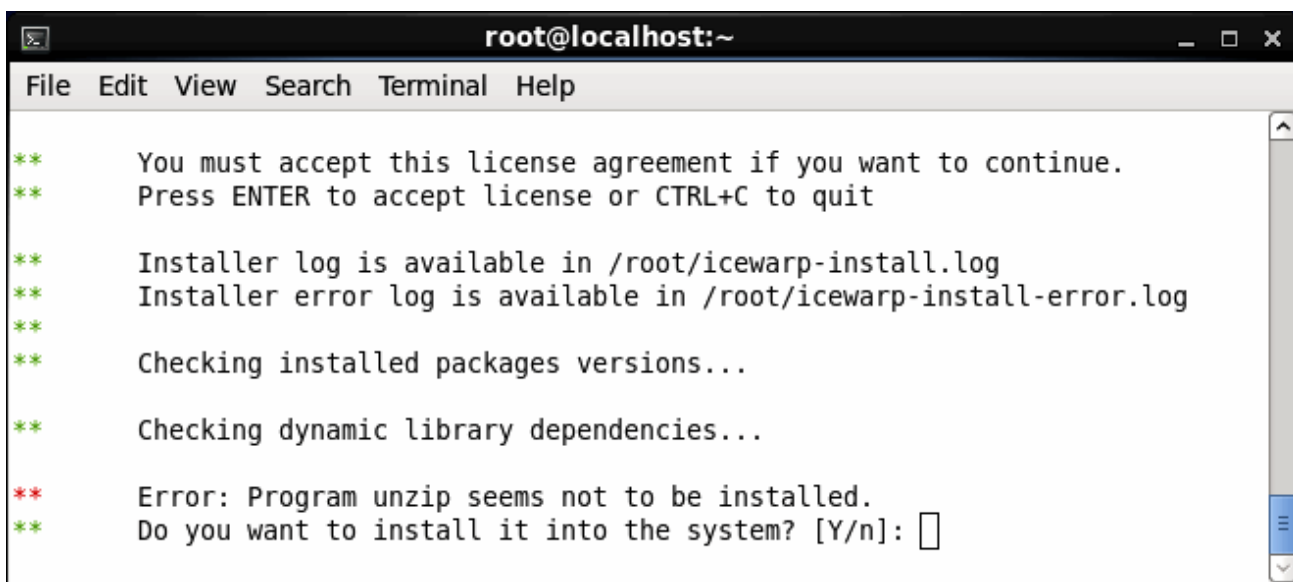
** Installer log is available in /root/icewarp-install.log
** Installer error log is available in /root/icewarp-install-error.log
**
** Checking dynamic library dependencies
** Warning: Some of the libraries required by IceWarp server was not found on this system.

Missing 32-bit libraries: libgd.so.2 libidn.so.11

These packages should be installed to satisfy the dependencies:
gd.i386 libidn.i386

** Do you want to install these packages into the system? [Y/n]: █
```

14. Unzip is now required for installation. It can be removed when installation of IceWarp server finishes.



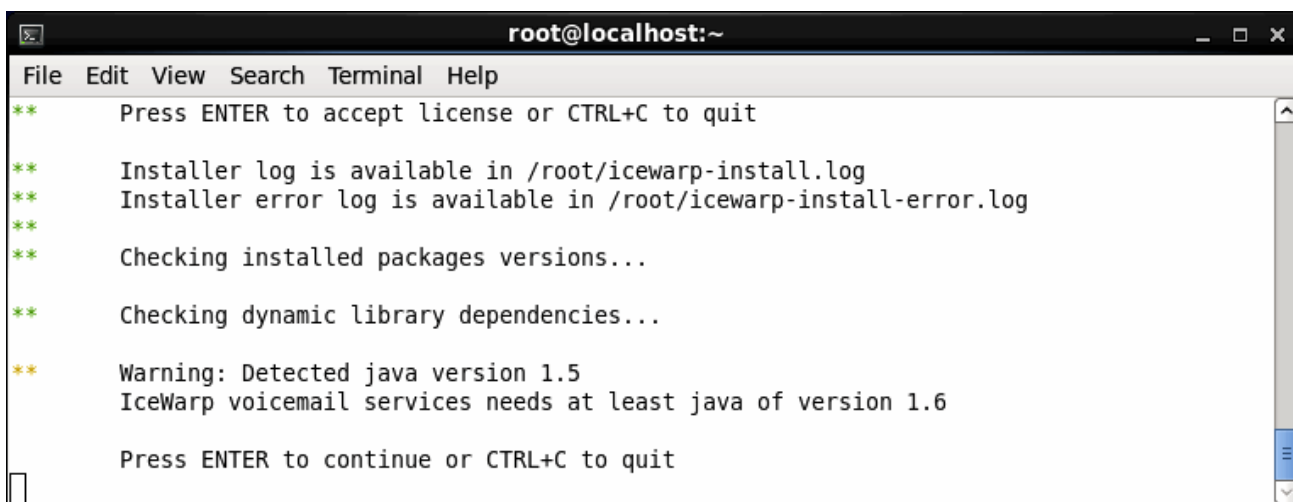
```
root@localhost:~  
File Edit View Search Terminal Help  
** You must accept this license agreement if you want to continue.  
** Press ENTER to accept license or CTRL+C to quit  
  
** Installer log is available in /root/icewarp-install.log  
** Installer error log is available in /root/icewarp-install-error.log  
**  
** Checking installed packages versions...  
  
** Checking dynamic library dependencies...  
  
** Error: Program unzip seems not to be installed.  
** Do you want to install it into the system? [Y/n]: 
```

15. Java is required by voicemail services. If Java is not installed, installer allows to install compatible Java (mostly 1.7, but 1.6 will do too).



```
root@localhost:~  
File Edit View Search Terminal Help  
** You must accept this license agreement if you want to continue.  
** Press ENTER to accept license or CTRL+C to quit  
  
** Installer log is available in /root/icewarp-install.log  
** Installer error log is available in /root/icewarp-install-error.log  
**  
** Checking installed packages versions...  
  
** Checking dynamic library dependencies...  
  
** Warning: Java does not seem to be installed.  
** Online conferencing, auto attendant and echo service needs java to operate  
  
** Do you want to install OpenJDK JRE 1.7.0 into the system? [Y/n]: 
```

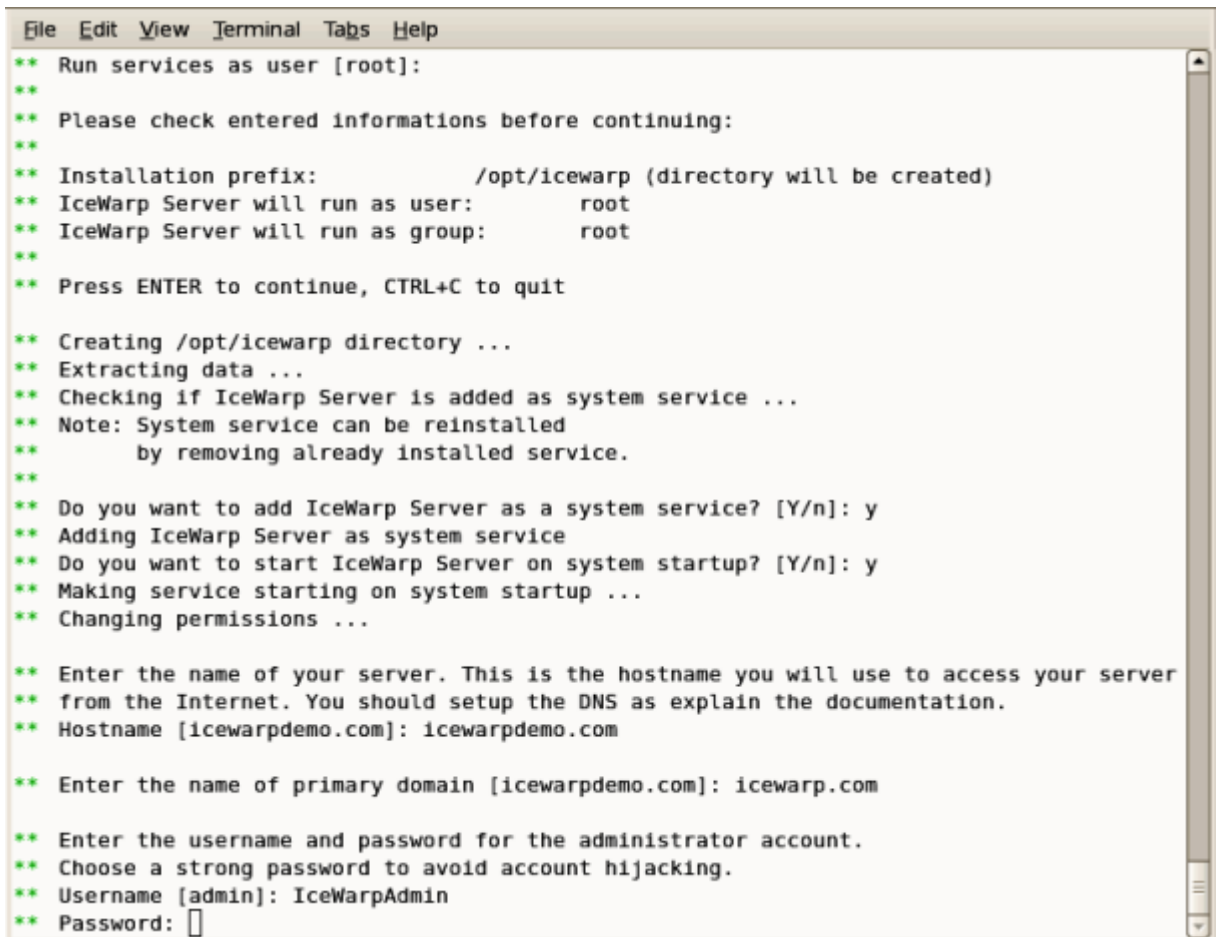
If there is installed Java < 1.6, installer warns, but will not try to upgrade Java. Administrator should break the installer using keyboard shortcut *Ctrl+C* and at least uninstall old Java. New Java will be installed then by installer.



```
root@localhost:~  
File Edit View Search Terminal Help  
** Press ENTER to accept license or CTRL+C to quit  
  
** Installer log is available in /root/icewarp-install.log  
** Installer error log is available in /root/icewarp-install-error.log  
**  
** Checking installed packages versions...  
  
** Checking dynamic library dependencies...  
  
** Warning: Detected java version 1.5  
** IceWarp voicemail services needs at least java of version 1.6  
  
** Press ENTER to continue or CTRL+C to quit  

```

16. Administrator Account:



```
File Edit View Terminal Tabs Help
** Run services as user [root]:
**
** Please check entered informations before continuing:
**
** Installation prefix:          /opt/icewarp (directory will be created)
** IceWarp Server will run as user:      root
** IceWarp Server will run as group:    root
**
** Press ENTER to continue, CTRL+C to quit

** Creating /opt/icewarp directory ...
** Extracting data ...
** Checking if IceWarp Server is added as system service ...
** Note: System service can be reinstalled
**       by removing already installed service.
**
** Do you want to add IceWarp Server as a system service? [Y/n]: y
** Adding IceWarp Server as system service
** Do you want to start IceWarp Server on system startup? [Y/n]: y
** Making service starting on system startup ...
** Changing permissions ...

** Enter the name of your server. This is the hostname you will use to access your server
** from the Internet. You should setup the DNS as explain the documentation.
** Hostname [icewarpdemo.com]: icewarpdemo.com

** Enter the name of primary domain [icewarpdemo.com]: icewarp.com

** Enter the username and password for the administrator account.
** Choose a strong password to avoid account hijacking.
** Username [admin]: IceWarpAdmin
** Password: [ ]
```

Hostname: Fill in the DNS resolvable hostname, the default is taken from system. Warning – if the system hostname is not set correctly, AntiSpam Live does not work.

Domain: Primary domain name.

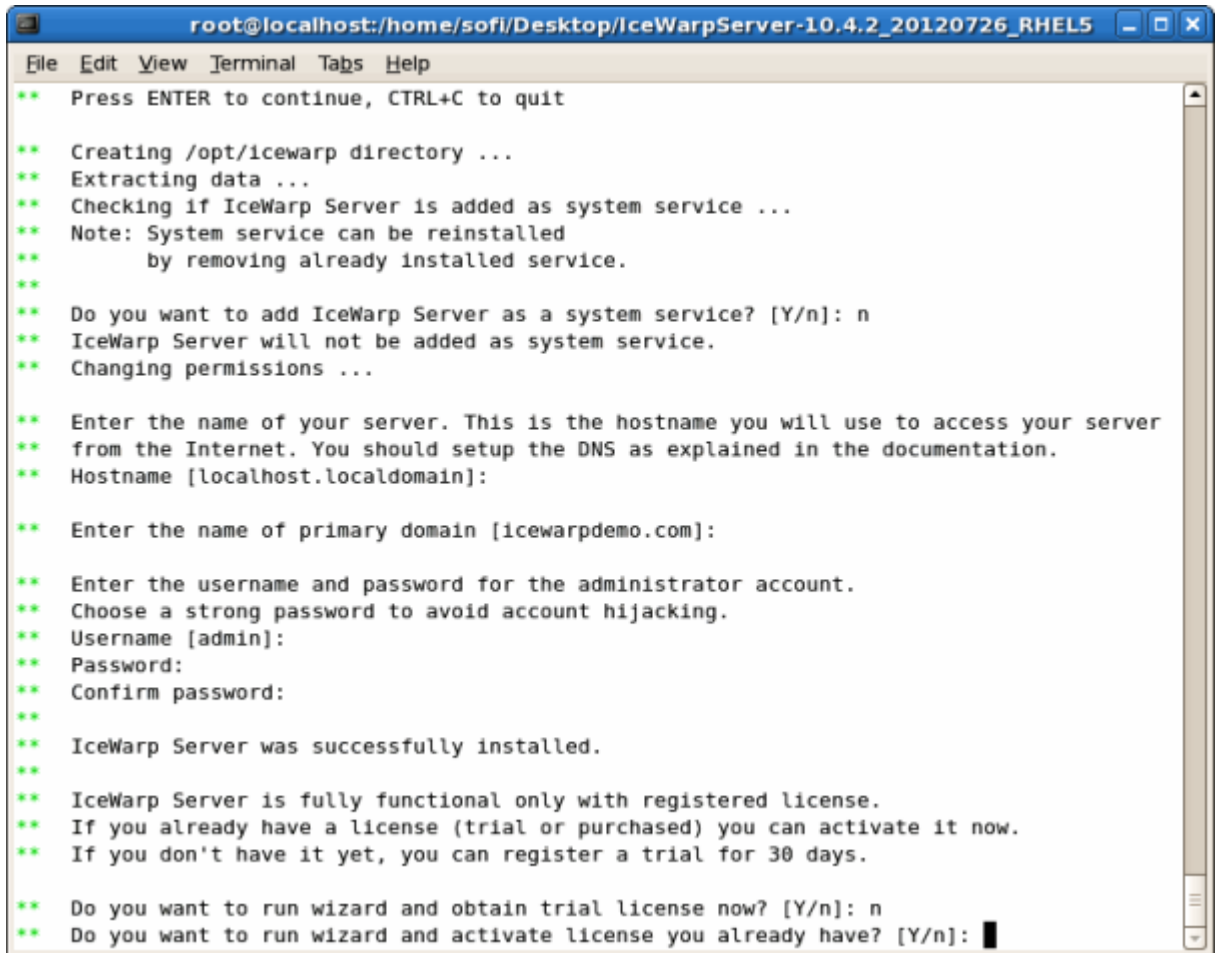
Administrator account: Username and password. Consider password policy – it is in effect. In case of any error, a user can retry or cancel the "wizard". Then they can configure the server manually using **wizard.sh** or other method.

17. License

IceWarp Server needs to have registered license to be fully functional. This can be purchased license or a trial one. After installation, setup will ask whether you want to register a trial license or activate a full one that you already have (purchased or a trial obtained from web). In this case, you will need to have ready the **Order-ID** of your license.

If you do not register any license, some components (e.g. WebAdmin) will not be available.

For information on license registration, refer to the **New License Registration** section further in this chapter.



```
root@localhost:/home/sofi/Desktop/IceWarpServer-10.4.2_20120726_RHEL5
File Edit View Terminal Tabs Help
** Press ENTER to continue, CTRL+C to quit
**
** Creating /opt/icewarp directory ...
** Extracting data ...
** Checking if IceWarp Server is added as system service ...
** Note: System service can be reinstalled
**       by removing already installed service.
**
** Do you want to add IceWarp Server as a system service? [Y/n]: n
** IceWarp Server will not be added as system service.
** Changing permissions ...
**
** Enter the name of your server. This is the hostname you will use to access your server
** from the Internet. You should setup the DNS as explained in the documentation.
** Hostname [localhost.localdomain]:
**
** Enter the name of primary domain [icewarpdemo.com]:
**
** Enter the username and password for the administrator account.
** Choose a strong password to avoid account hijacking.
** Username [admin]:
** Password:
** Confirm password:
**
** IceWarp Server was successfully installed.
**
** IceWarp Server is fully functional only with registered license.
** If you already have a license (trial or purchased) you can activate it now.
** If you don't have it yet, you can register a trial for 30 days.
**
** Do you want to run wizard and obtain trial license now? [Y/n]: n
** Do you want to run wizard and activate license you already have? [Y/n]: █
```

18. Installation is completed now:

```

File Edit View Terminal Tabs Help
** IceWarp Server will run as group:      root
**
** Press ENTER to continue, CTRL+C to quit

** Creating /opt/icewarp directory ...
** Extracting data ...
** Checking if IceWarp Server is added as system service ...
** Note: System service can be reinstalled
**       by removing already installed service.
**
** Do you want to add IceWarp Server as a system service? [Y/n]: y
** Adding IceWarp Server as system service
** Do you want to start IceWarp Server on system startup? [Y/n]: y
** Making service starting on system startup ...
** Changing permissions ...

** Enter the name of your server. This is the hostname you will use to access your server
** from the Internet. You should setup the DNS as explain the documentation.
** Hostname [icewarpdemo.com]: icewarpdemo.com

** Enter the name of primary domain [icewarpdemo.com]: icewarp.com

** Enter the username and password for the administrator account.
** Choose a strong password to avoid account hijacking.
** Username [admin]: IceWarpAdmin
** Password:
**
** IceWarp Server was successfully installed.
**
** Installer log is available in /root/icewarp-install.log
** Installer error log is available in /root/icewarp-install-error.log
[root@localhost ~]#

```

19. Run the IceWarp Wizard immediately after installation or at a later stage by executing `./wizard.sh` from the `/install_volume/icewarp` ie. `/opt/icewarp`.

NOTE: The storage can be also configured via WebAdmin or Remote Console. Refer to their documentation for more details.

NOTE: If you want to change a groupware storage, the GW service has to be started first (see below, how to start the service).

```

root@centos53svr3:/opt/icewarp
File Edit View Terminal Tabs Help
**
**      Root menu
**      -----
**
**      You have the following options:
**
**      [1] Accounts and Domains management
**      [2] License operations
**      [3] Storage setup
**
**      [0] Return
**      [Q] Exit
**
**      Enter your choice:

```

20. Change storage setup to MySQL [3] for accounts, AntiSpam and GroupWare.

NOTE: WebClient, ActiveSync and spam reports databases cannot be changed by this wizard. WebAdmin or Remote Console is needed.

```
root@centos53svr3:/opt/icewarp
File Edit View Terminal Tabs Help
**
**      Root menu
**      -----
**
**      You have the following options:
**
**      [1] Accounts and Domains management
**      [2] License operations
**      [3] Storage setup
**
**      [0] Return
**      [Q] Exit
**
**      Enter your choice:
```

```
root@centos53svr3:/opt/icewarp
File Edit View Terminal Tabs Help
**
**      Storage setup
**      -----
**
**      You have the following options:
**
**      [1] Set Accounts storage
**      [2] Set Antispam storage
**      [3] Set GroupWare storage
**
**      [0] Return
**      [Q] Exit
**
**      Enter your choice: █
```

```
root@centos53svr1:/opt/icewarp
File Edit View Terminal Tabs Help
**      [2] Setup to use MySQL database
**      [3] Setup to use SQLite database
**
**      [0] Return
**      [Q] Exit
**
**      Enter your choice: 2
**
**      This action requires to have running MySQL server with
**      created database with required privileges.
**      Continue? [Y/n]: y
**
**      Setup Accounts storage to MySQL? [Y/n]: y
**
**      Please enter MySQL connection parameters:
**      Database server host (or path to socket) [/var/lib/mysql/mysql.sock]:
**      Login name: root
**      Login password: **
**      Once again to confirm: **
**      Database name: icewarp_accounts
**      Setting database connection...
**
**      Create tables for Accounts? [Y/n]: y
**      Creating tables...
**      Switching Accounts storage mode...
**      Storage switched to MySQL.
**
**      Convert data from file system to database? [Y/n]: y
```

21. IceWarp Server installation done!

Logs are available at */root/icewarp-install.log* & */root/icewarp-install-error.log*.

Run the IceWarp Services by executing *./icewarpd.sh --start* from the installation directory, by default */opt/icewarp*.

22. Next, verify that primary IceWarp Server services are operating properly.

```

root@centos53svr1:~
File Edit View Terminal Tabs Help
[root@centos53svr1 ~]# telnet localhost 25
Trying 127.0.0.1...
Connected to localhost.localdomain (127.0.0.1).
Escape character is '^]'.
220 mail.domain.com ESMTP IceWarp 10.0.0 (2009-08-03) RHEL5.3; Tue, 11 Aug 2009 09:57:31 +1000
quit
221 2.0.0 mail.domain.com closing connection
Connection closed by foreign host.
[root@centos53svr1 ~]# telnet localhost 110
Trying 127.0.0.1...
Connected to localhost.localdomain (127.0.0.1).
Escape character is '^]'.
+OK mail.domain.com IceWarp 10.0.0 (2009-08-03) RHEL5.3 POP3 Tue, 11 Aug 2009 09:57:36 +1000 <20090811095736@mail.domain.com>
quit
+OK mail.domain.com closing connection
Connection closed by foreign host.
[root@centos53svr1 ~]# telnet localhost 143
Trying 127.0.0.1...
Connected to localhost.localdomain (127.0.0.1).
Escape character is '^]'.
* OK IceWarp 10.0.0 (2009-08-03) RHEL5.3 IMAP4rev1 Tue, 11 Aug 2009 09:57:41 +1000

```

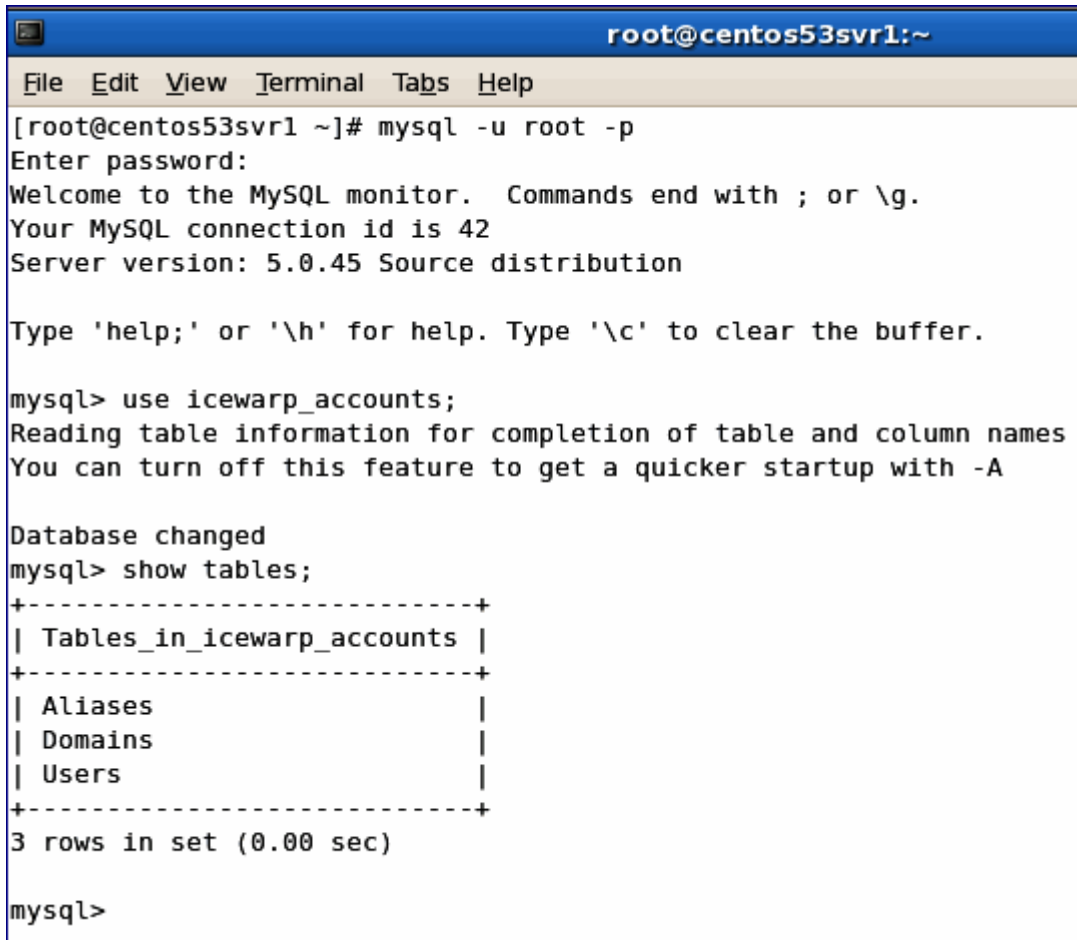
23. Check services startup using `chkconfig --list | grep on`.

```

root@centos53svr1:~
File Edit View Terminal Tabs Help
autofs          0:off  1:off  2:off  3:on   4:on   5:on   6:off
avahi-daemon    0:off  1:off  2:off  3:on   4:on   5:on   6:off
avahi-dnsconfd 0:off  1:off  2:off  3:off  4:off  5:off  6:off
bluetooth      0:off  1:off  2:on   3:on   4:on   5:on   6:off
conman         0:off  1:off  2:off  3:off  4:off  5:off  6:off
cpuspeed       0:off  1:on   2:on   3:on   4:on   5:on   6:off
crond          0:off  1:off  2:on   3:on   4:on   5:on   6:off
cups           0:off  1:off  2:on   3:on   4:on   5:on   6:off
firstboot      0:off  1:off  2:off  3:on   4:off  5:on   6:off
gpm            0:off  1:off  2:on   3:on   4:on   5:on   6:off
haldaemon     0:off  1:off  2:off  3:on   4:on   5:on   6:off
hidd          0:off  1:off  2:on   3:on   4:on   5:on   6:off
icewarp       0:off  1:off  2:off  3:on   4:on   5:on   6:off
ip6tables     0:off  1:off  2:on   3:on   4:on   5:on   6:off
iptables      0:off  1:off  2:on   3:on   4:on   5:on   6:off
irqbalance    0:off  1:off  2:on   3:on   4:on   5:on   6:off
isdn          0:off  1:off  2:on   3:on   4:on   5:on   6:off
kudzu         0:off  1:off  2:off  3:on   4:on   5:on   6:off
lvm2-monitor  0:off  1:on   2:on   3:on   4:on   5:on   6:off
mcstrans      0:off  1:off  2:on   3:on   4:on   5:on   6:off
mdmonitor     0:off  1:off  2:on   3:on   4:on   5:on   6:off
messagebus    0:off  1:off  2:off  3:on   4:on   5:on   6:off
microcode ctl 0:off  1:off  2:on   3:on   4:on   5:on   6:off
mysqld        0:off  1:off  2:on   3:on   4:on   5:on   6:off
netconsole    0:off  1:off  2:off  3:off  4:off  5:off  6:off
netfs         0:off  1:off  2:off  3:on   4:on   5:on   6:off
network       0:off  1:off  2:on   3:on   4:on   5:on   6:off
nfslock       0:off  1:off  2:off  3:on   4:on   5:on   6:off
pcscd         0:off  1:off  2:on   3:on   4:on   5:on   6:off

```

24. Check MySQL tables.



```
root@centos53svr1:~
File Edit View Terminal Tabs Help
[root@centos53svr1 ~]# mysql -u root -p
Enter password:
Welcome to the MySQL monitor.  Commands end with ; or \g.
Your MySQL connection id is 42
Server version: 5.0.45 Source distribution

Type 'help;' or '\h' for help. Type '\c' to clear the buffer.

mysql> use icewarp_accounts;
Reading table information for completion of table and column names
You can turn off this feature to get a quicker startup with -A

Database changed
mysql> show tables;
+-----+
| Tables_in_icewarp_accounts |
+-----+
| Aliases                    |
| Domains                    |
| Users                      |
+-----+
3 rows in set (0.00 sec)

mysql>
```

```
root@centos53svr1:~
File Edit View Terminal Tabs Help
Your MySQL connection id is 42
Server version: 5.0.45 Source distribution

Type 'help;' or '\h' for help. Type '\c' to clear the buffer.

mysql> use icewarp_accounts;
Reading table information for completion of table and column names
You can turn off this feature to get a quicker startup with -A

Database changed
mysql> show tables;
+-----+
| Tables_in_icewarp_accounts |
+-----+
| Aliases                    |
| Domains                   |
| Users                     |
+-----+
3 rows in set (0.00 sec)

mysql> select * from Aliases;
+-----+-----+-----+
| A_Alias | A_Domain | A_UserID |
+-----+-----+-----+
| admin  | icewarp.au |          1 |
+-----+-----+-----+
1 row in set (0.00 sec)

mysql>
```

25. Check IceWarp WebClient, IceWarp WebClient Basic, WebAdmin and Remote Console login.



Welcome to IceWarp Web Client

IceWarp

Login

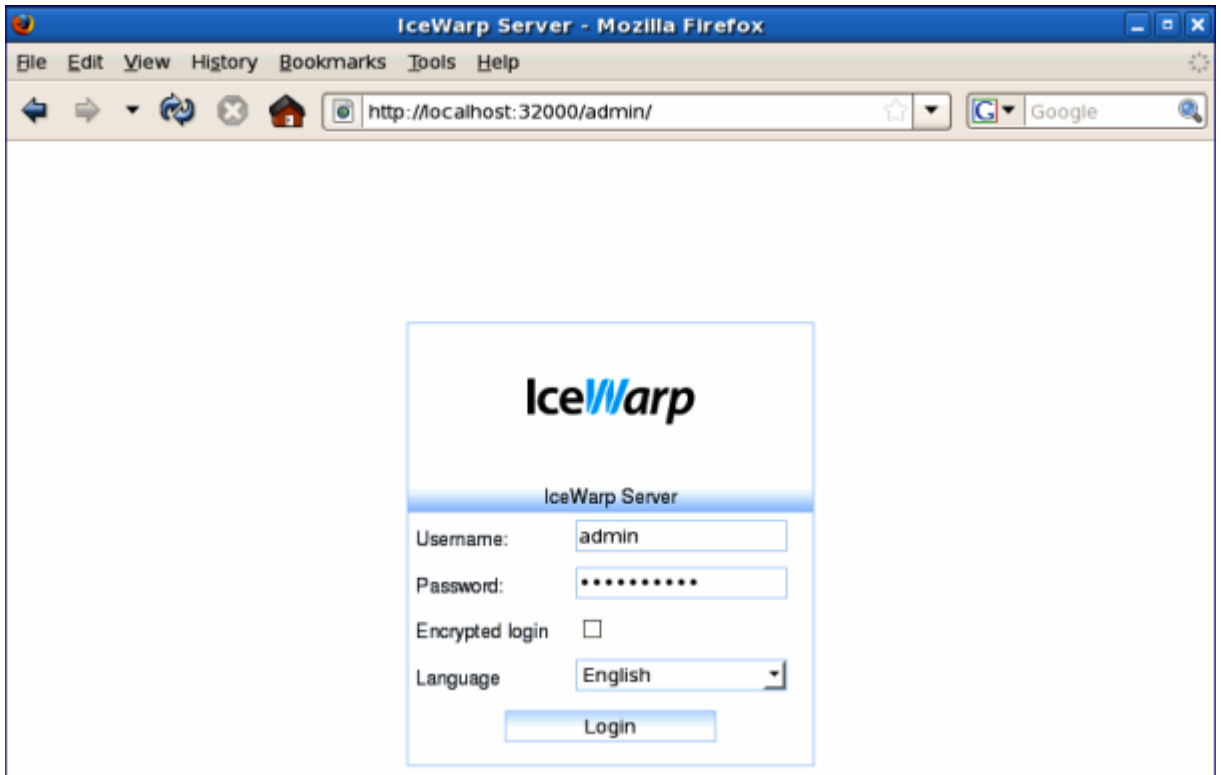
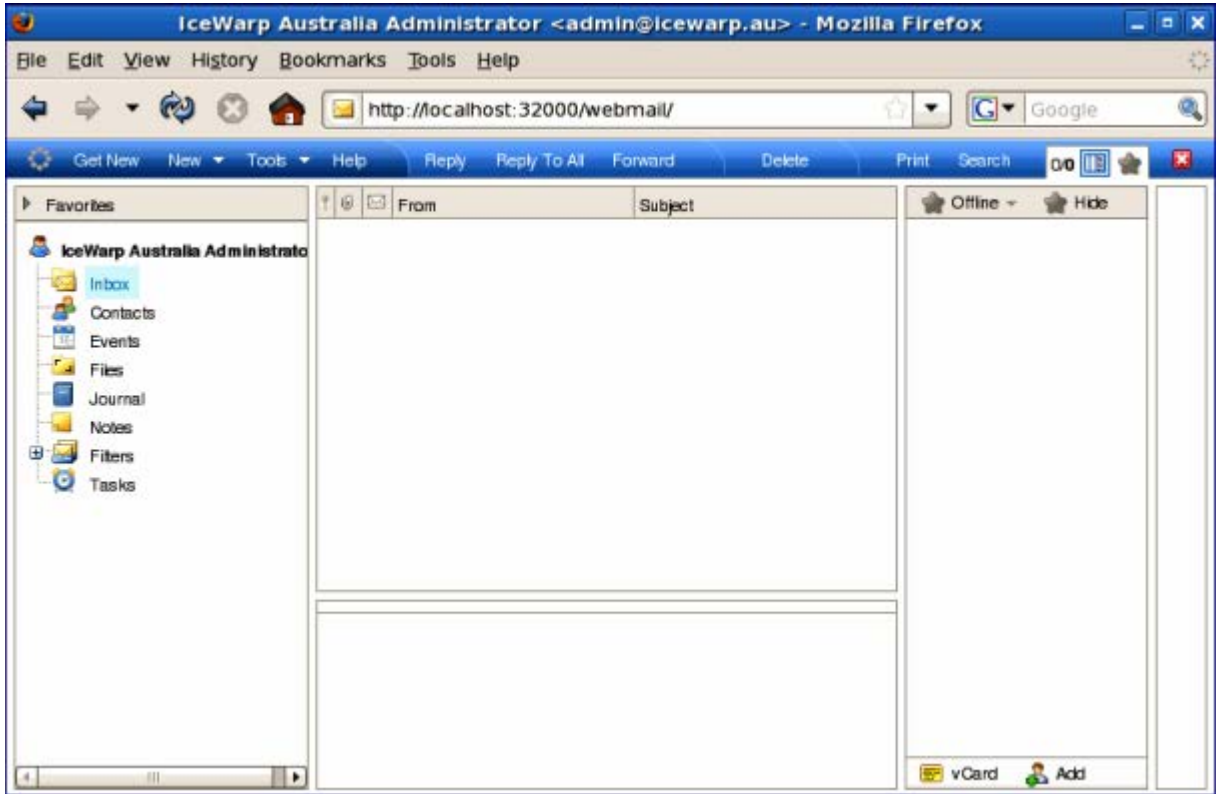
User: admin

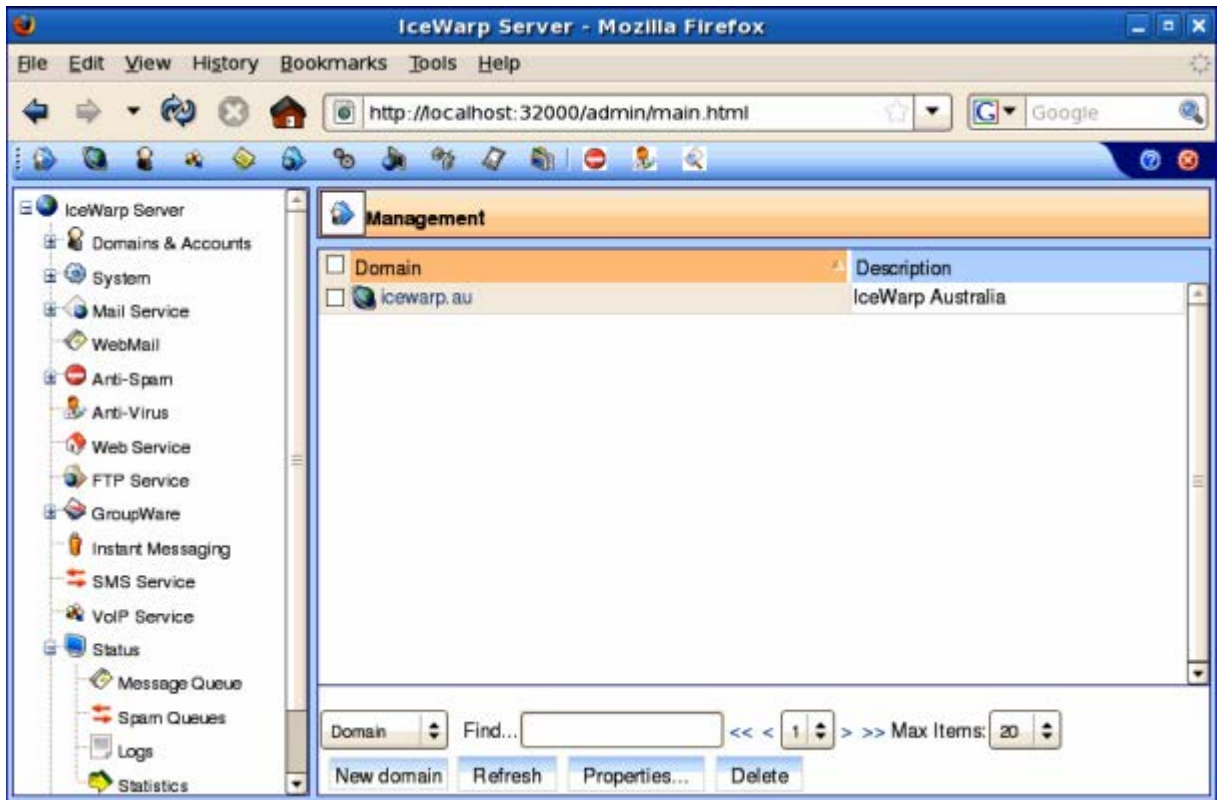
Password:

Remember: Always ask

Switch to [Basic](#) or [PDA](#) interface.

Login





26. Single Sign-On Multiple domain login

NOTE: Single Sign-On service name consists of two parts: vhost@ADSERVER.

vhost can be the same as long ADSERVER is the same for multiple IceWarp domains. Thus when administrator wants to have multiple SSO enabled domains connected to multiple AD domains, he has to have different vhost parts.

Silent Installation

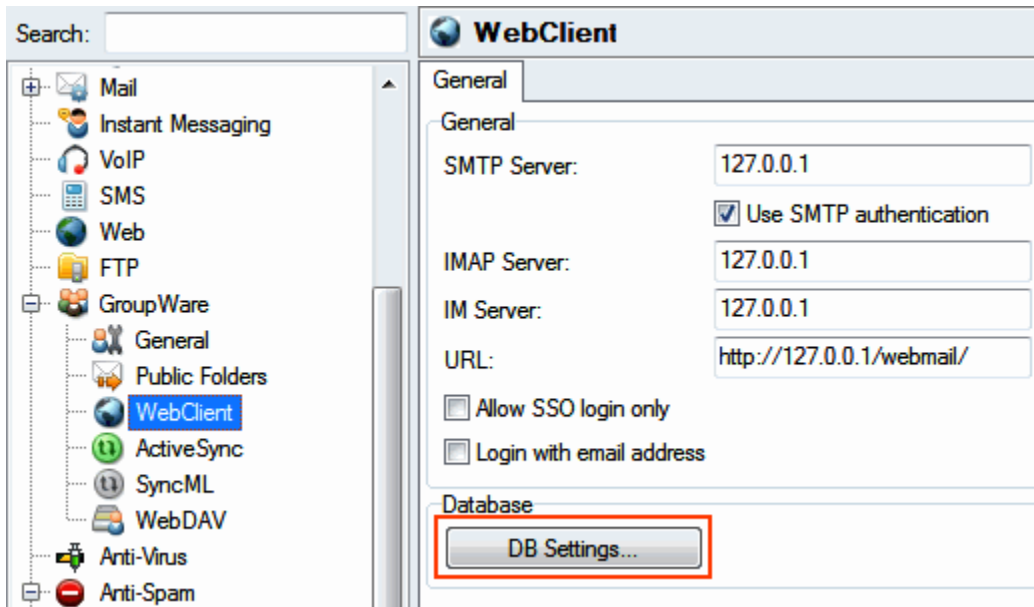
This useful feature can streamline automated upgrades. When such a silent installation is run, default values (i.e. those found before the upgrade) are used.

To run this silent installation, use the ***install.sh --auto*** command.

It is possible to run this command manually, or to create a custom script and incorporate the command into it.

Using MySQL Database for IceWarp WebClient

1. Change setting in IceWarp Server to use *icewarp_webmail* database in MySQL.



2. After logging into IceWarp WebClient, IceWarp Server will create the necessary tables ...

```

root@centos53svr1:~
File Edit View Terminal Tabs Help
[root@centos53svr1 ~]# mysql -u root -p
Enter password:
Welcome to the MySQL monitor.  Commands end with ; or \g.
Your MySQL connection id is 84
Server version: 5.0.45 Source distribution

Type 'help;' or '\h' for help. Type '\c' to clear the buffer.

mysql> use icewarp_webmail;
Reading table information for completion of table and column names
You can turn off this feature to get a quicker startup with -A

Database changed
mysql> show tables;
+-----+
| Tables_in_icewarp_webmail |
+-----+
| folder                    |
| item                      |
| wm_metadata               |
+-----+
3 rows in set (0.00 sec)

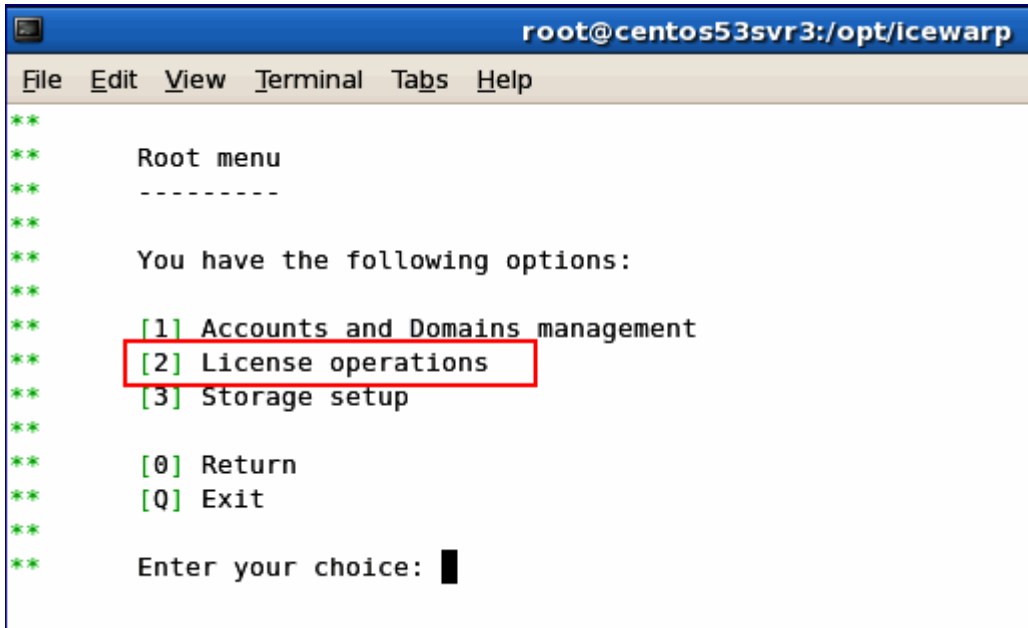
mysql>

```

NOTE: This applies for FRESH installation, for existing installations you should rather migrate the WebClient PDO DB in System – Tools – DB Migration (or else you lose colored flags in WebClient and pure POP3 accounts read status).

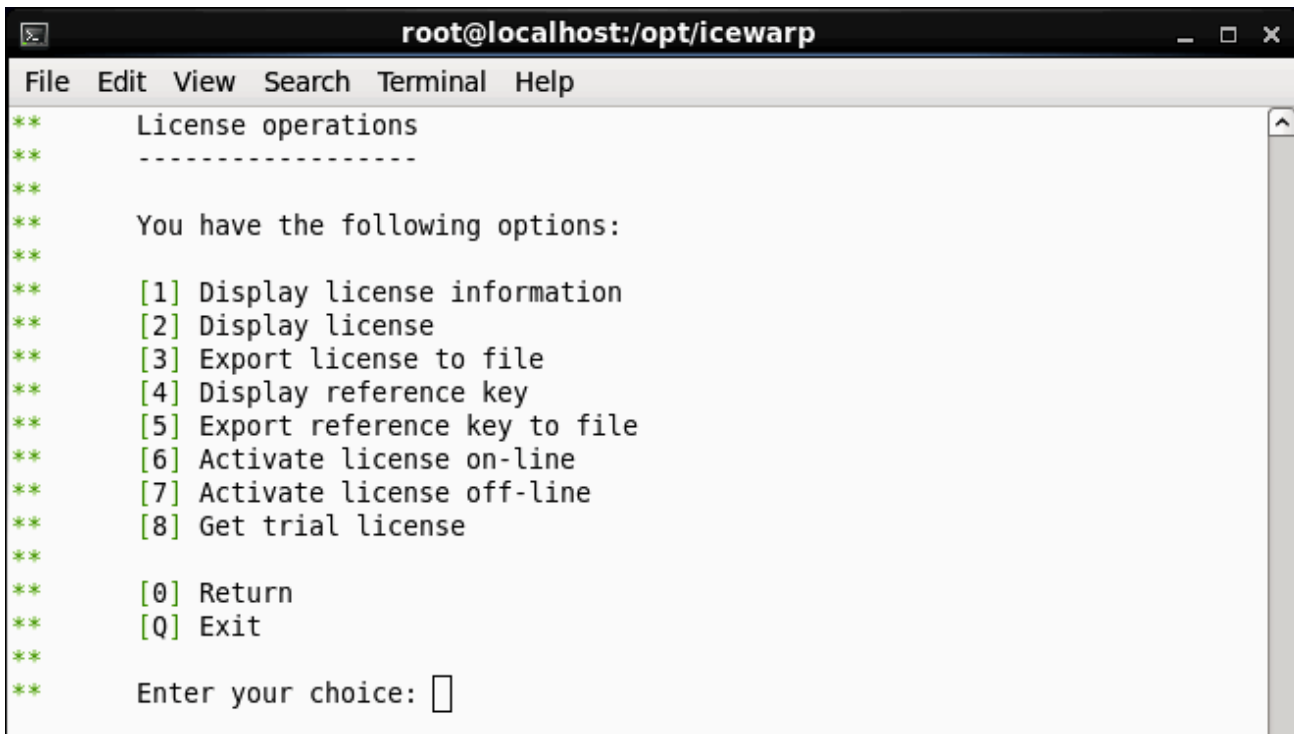
New License Registration

1. Start the `./wizard.sh` from `<pathtoicewarp>` and go to **[2] License Operations**. (WebAdmin or Remote Console can be also used for this task.)



```
root@centos53svr3:/opt/icewarp
File Edit View Terminal Tabs Help
**
**      Root menu
**      -----
**
**      You have the following options:
**
**      [1] Accounts and Domains management
**      [2] License operations
**      [3] Storage setup
**
**      [0] Return
**      [Q] Exit
**
**      Enter your choice: █
```

2. Select **[5] Export reference key to file**, save the file to `<filename>.xml` and send it to your IceWarp Partner for processing of your new license key.



```
root@localhost:/opt/icewarp
File Edit View Search Terminal Help
**
**      License operations
**      -----
**
**      You have the following options:
**
**      [1] Display license information
**      [2] Display license
**      [3] Export license to file
**      [4] Display reference key
**      [5] Export reference key to file
**      [6] Activate license on-line
**      [7] Activate license off-line
**      [8] Get trial license
**
**      [0] Return
**      [Q] Exit
**
**      Enter your choice: █
```

3. Once your NEW license has been processed, it will be e-mailed to you. Copy & paste the license block into `<pathtoicewarp>/config/license.key`.

```

root@centos53svr3:/opt/icewarp/config
File Edit View Terminal Tabs Help
[root@centos53svr3 ~]# cd /opt/icewarp/config
[root@centos53svr3 config]# nano license.key

```

```

root@centos53svr3:/opt/icewarp/config
File Edit View Terminal Tabs Help
GNU nano 1.3.12 File: license.key
VBMTcQe5lahkMF3hS8pr7s+fR/+pCbbeMmDvRribN6rkHZ0G03fws
P0fIi8pf0FN3Ro002AAfQ0Igiuw73ekCx9S0F6gdoibaraIfEz9QZi
KulUvgXxZXAEkmqdfuepzgET/65EYvab1xxcj81TBKwZaTRwG5E07U
8ZXacT7FMFXsUGhsnQR62s5udBKVmNdNpkmp81HzPNs21j fzKGwTRm
Hz06e6q3G+Y3v9hjtaIRDQdpJS+uK0+dJzQm4Y0yi+wVJTlyxA6Ywz
bKuKeR0m5TqatYVVUdM1ia0hCrnAy2xGfoggYvHaBxX4XQZD8P+7Xm
8j70y9VnxLkSnxppDd6dKkWS1SaTFpWmSk2FgBBpW8+03ja1RUGgZn
IEXcEdsKf05wo0ZiEPt6LLOp1LWorXVF0UK4wkbA5eB+vKEK3ZHh0L
wrsBugs8MGEHrmF/2Fo85x43h5xFHYF0bzdAWECT2fGf+Ln1x5VAs7
ibwBY2x21J9FT04SdNoki0KMVYlQ9FoZy4m8Ab6ncILaI7j3eiLkNZ
h0nIRTMaNXsvQH0ssvX5Y0XGVzjiK6iJ8IWUQSJgByxl5k93STr+8z
HGSM6BACU48eUQMLTPzH5llbaA0o2aExRlYIRdfufZA6dlrg0QgPeT
835XBRt3KpDhsLCZiYw4j f0A+2AH5jpCtXlfS1ZCc6aWKHxN97vrjo
w4799+3iDmJZZokPrmZwFWJlt4bVMYGvAxPwWXMlg60P4MQHMqGDv
Yjo8rLZPCHPAWDDUpef+Xd2RUvK2Wvjuc8Gi7lT9mor76np4WxLNXH
28G6Zct6wfg9f2ZU1Jez45+575tVjKJZS07UVav69xKwDkw5PQWeUV
dgcWx+V4z9Xcf0jUZKw3CPMiCbdbiUB0FwzL4ykk24dHdgVYwFNIzg
adg0IHQYk2l7GM6WJEwAR2XP7QSVY9N3NALdlkBrFJE0QV0s16anHS
0eHsuWh3LSrbxBhWpn2spiaxm7G7rk2CUws=

```

4. You may then review and verify your license using the `wizard.sh[1] Display License Information`.

```

root@centos53svr3:/opt/icewarp
File Edit View Terminal Tabs Help
**
** License operations
** -----
**
** You have the following options:
**
** [1] Display license information
** [2] Display license
** [3] Export license to file
** [4] Display reference key
** [5] Export reference key to file
** [6] Fetch license online
**
** [0] Return
** [Q] Exit
**
** Enter your choice: 1

```

root@centos53svr3:/opt/icewarp						
Product	Domains	Accounts	Type	Creation date	License expires	Update
Mail Server	Unlimited	Professional 25	Registered	2007-12-04	Never	1095
WebMail	Unlimited	25	Registered	2007-12-04	Never	1095
FTP	Unlimited	25	Registered	2007-12-04	Never	1095
Anti-Spam	Unlimited	25	Registered	2007-12-04	Never	1095
Anti-Virus	Unlimited	25	Registered	2007-12-04	Never	1095
Instant Messaging	Unlimited	25	Registered	2007-12-04	Never	1095
GroupWare	Unlimited	25	Registered	2007-12-04	Never	1095
SyncML	Unlimited	25	Registered	2007-12-04	Never	1095
SIP	Unlimited	25	Registered	2007-12-04	Never	1095
Outlook-Connector	Unlimited	Unlimited	Evaluation	2009-08-11	30	30
CalDAV	Unlimited	25	Registered	2007-12-04	Never	1095
Anti-Spam Live	Unlimited	Unlimited	Evaluation	2009-08-11	30	30
Log Analyzer			Registered	2007-12-04	Never	1095

Migration from Windows to Linux

To migrate IceWarp Server from Windows to Linux, use IceWarp Migrator – download here: <https://www.icewarp.com/downloads/tools/> (IceWarp to IceWarp Migration Tool).

webserver.dat Migration

webserver.dat resides in the **config** subdirectory of IceWarp server installation and in contrast to other **config** files, its Windows and Linux differences are not handled automatically by settings restore. Thus you need to do the changes manually. Linux server will not work with **webserver.dat** from Windows and vice versa. There are basically three options how to migrate **webserver.dat**:

1. The more simple way is to backup **webserver.dat** from the Linux installation and copy it back after Windows settings restore. This is recommended if user does not configure web server in any way – no pool tuning and only default web.
2. The second way is to merge **webserver.dat** from Windows and Linux. This can be best done by some merge tool. Here is a list of differences in the default webserver's dat for reference:

Windows line	Linux line
<MODULE>(fastcgi);php\php.exe</MODULE>	<MODULE>(fastcgi)var/php.socket;scripts/phpd.sh</MODULE>
<MODULE>modules\wcs.dll</MODULE>	<MODULE>(isapi)modules/libwcs.so</MODULE>
<SCRIPT>webdav\index.html</SCRIPT>	<SCRIPT>webdav/index.html</SCRIPT>
<SCRIPT>activesync\index.html</SCRIPT>	<SCRIPT>activesync/index.html</SCRIPT>
<SCRIPT>autodiscover\index.html</SCRIPT>	<SCRIPT>autodiscover/index.html</SCRIPT>
<PATH>..\install\</PATH>	<PATH>../install/</PATH>
<PATH>..\doc\</PATH>	<PATH>../doc/</PATH>

3. The third way is to rename the file – when you forget to backup the **webserver.dat** file and do not want to merge it, you can also rename **webserver.dat** and run installation of Linux server again. **webserver.dat** will be recreated. Again, this scenario is not suitable when you did some modifications of the Web server configuration.

Controlling IceWarp Server in Linux

Starting Server and/or Services

```
[linux]$ ./icewarpd.sh --start
```

– starts "icewarpd" and automatically starts all services, except PHP, which is started when first HTTP request arrives.

```
[linux]$ ./icewarpd.sh --start control|gw|im|pop3|smtp|all
```

– starts the selected service or all services.

If the control is started, it starts PHP on the first HTTP request.

Stopping Server and/or Services

```
[linux]$ ./icewarpd.sh --stop
```

– stops all running services, stops "icewarpd" and also PHP. This is the command for complete server shutdown.

```
[linux]$ ./icewarpd.sh --stop control|gw|im|pop3|smtp|all
```

– stops selected service or all services. This command causes PHP stop together with control.

Service Icewarpd Functionality

When the "icewarpd daemon" is running, it:

- checks every 10 seconds whether all started services are running. If not, service is re-started
- executes Kaspersky service and updater to run with root privileges
- kills orphaned childs of services
- on exit kills all running *kavscanner* processes by it's name. To disable this, define environment variable of *IWS_NO_KILL_KAVSCANNER*
- runs with root privileges even if server does not.

Commands Table

Action \ Platform	RHEL 5 and RHEL 6	Other distributions
Start all services and icewarpd	[pc]\$ service icewarp start	[pc]\$./icewarpd.sh --start
Stop all services and icewarpd	[pc]\$ service icewarp stop	[pc]\$./icewarpd.sh --stop
Restart all services and icewarpd	[pc]\$ service icewarp restart	[pc]\$./icewarpd.sh --restart
Start specific service	[pc]\$./icewarpd.sh --start x	[pc]\$./icewarpd.sh --start x
Stop specific service	[pc]\$./icewarpd.sh --stop x	[pc]\$./icewarpd.sh --stop x
Check specific service	[pc]\$./icewarpd.sh --check x	[pc]\$./icewarpd.sh --check x

Possible services are: control, gw, im, pop3, smtp, all.

IceWarp Server Administration

Windows Administration Console

- unzip remote *config* Windows executable available in installation subdirectory in your IceWarp installation, to connect to IceWarp Server remotely

Frontend administrative authorities of the Web (Web Admin).

- `http:// <Your_Server>/admin/`

Command Line wizard.sh

- used for quick setup and easy tasks, scriptable for more complex tasks
- can create the initial account, set up database connection, install license, register trial license
- `cd /opt/IceWarp`
- `./wizard.sh`

Command Line tool.sh (direct API access)

- `cd /opt/IceWarp`
- `./tool.sh`

NOTE: The Remote Administration Console and Web Admin depend on working Control service. Here are three examples where you may lose access to the Control service and how tool.sh can be used to resolve the problem.

Example 1

In case user accounts are stored in database and you modify the DB connection specifying an incorrect hostname, you lose access to WebAdmin and remote console, because users fail to authenticate with the accounts database.

Check `/opt/IceWarp/api/delphi/APIConst.pas` and find the constant that defines the connection string:

`C_System_Storage_Accounts_ODBCConnString = $61 // ODBC Connection String`

To view the current connection string, use the command:

`./tool.sh display system C_System_Storage_Accounts_ODBCConnString`

`C_System_Storage_Accounts_ODBCConnString:icewarp_accounts;root;password@;localhost,3,2`

If DB is not on localhost, but on `mysql.icewarpdemo.com`, you can change the connection string via `wizard.sh` such as:

`./tool.sh modify system`

`C_System_Storage_Accounts_ODBCConnStringicewarp_accounts;root;password@;mysql.mydomain.com;3;2`

(The above line is typed entirely on one line.)

Example 2

*You forget password of an administrator account, so you cannot access Remote Administration Console or Web Administration. You need to create a new administrator account, replacing **newpassword** with the password of choice:*

`./tool.sh create account admin2@icewarpdemo.com u_password newpassword u_admin 1`

Example 3

Web service can be stopped (disabled). Enable it using tool `./tool.sh set system C_Mail_Control_Active 1`

BE AWARE: The remote console at the IceWarp site need not be the right one for the server. Always use the console from the `<install_dir>/install` subdirectory – `remotefconfig-<version>.zip` file. This is the console that matches.

Installation of Spell Checker Dictionaries

IceWarp Server WebClient has a built-in spell checker based on the Enchant library. Enchant is a free open source library that interfaces many spell checking dictionaries. IceWarp Server uses Hunspell dictionaries, which are the same like, for example, OpenOffice.org uses.

You can download these dictionaries (free) from <http://extensions.services.openoffice.org/dictionary/>.

To install a dictionary, use the `./scripts/install_hunspell_dictionary.sh` script. Use the dictionary file name as a first command line parameter and required language ID as the second one.

Example of the command for the Czech dictionary installation:

```
[linux]# ./scripts/install_hunspell_dictionary.sh /home/user/dicts-cs-2.0.oxt cs_CZ
```

After dictionary installation, this new dictionary will not be available in WebClient. To configure it, you have to add a record about this dictionary to the WebClient configuration file: `./config/_webmail/spellchecker.xml`

Add a line with your newly installed dictionary between the `<item>` and `</item>` tags. The line consists of the `<XY>name of language</XY>` tag, where XY is the language code of the dictionary (with optional region and variety, see the dictionary file name).

Example:

```
<spellchecker_languages>  
<item>  
  <en_US>English</en_US>  
  <cs>Czech</cs>  
  <pt_BR>Portuguese</pt_BR>  
</item>  
</spellchecker_languages>
```

NOTE: The `<install_dir>/config/_webmail/spellchecker.xml` file is created after the first login to WebClient and after displaying of the dialog for spell checker setting. This dialog is accessible via the **Settings** menu item within the email composer window.

Adjusting PHP

There are differences between Linux and Windows versions in adjusting PHP. The **webserver.dat** file includes some PHP directives which are not propagated into the PHP start script in Linux.

PHP is started from the **phpd.sh** script which is configured as the default handler for PHP in IceWarp Server.

Bundled PHP FastCGI manager is used. The **phpd.sh** script expects four parameters. Control passes these variables to **phpd.sh**. They are taken from these **webserver.dat** variables:

- `webappmaxthreads = fcgi_threadpool`, this gives the number of PHP threads, that should run. When **fcgi_threadpool** is not specified, global thread pool size is used.
- `bindip = fcgi_bindip`, the IP on which PHPs listen for requests, typically localhost.
- `maxround = fcgi_maxrounds`, the number of requests, after which PHP process is respawned. This prevents memory exhaustion caused by possible leaks.
- `restart500 = fcgi_restart500`, the number of 500 responses, after which PHP process is respawned.

It performs safety checks:

- if **WEBAPPMAXTHREADS** is not set, then **PHP_FCGI_CHILDREN** is set to 15,
- if **WEBAPPMAXTHREADS** is not a number, then **PHP_FCGI_CHILDREN** is set to 15.

How IceWarp Server determines **WEBAPPMAXTHREADS**:

- If **webserver.dat** includes the **FastCGIThreadPool** variable with value greater than or equal to zero, then it is passed to configured FastCGI (default is **phpd.sh**) as **WEBAPPMAXTHREADS**.
- If the above condition is not met, then API variable of **C_WebService_AppMaxThreads** is passed to configured FastCGI (default is **phpd.sh**) as **WEBAPPMAXTHREADS**.

PHP logs in IceWarp/log directory:

- **phpstartup.log** – the output of PHP start command. If PHP does not start at all, often because of missing dependency, the reason can be found here.

PHP logs in IceWarp/logs/php-fpm directory:

- **php-fpm.log** – the log of fastCGI pool manager, default error level is warning. You can find reports about PHP processes respawning here.
- **phpslow.log** – if PHP thread is running for more than 2 minutes, current thread backtrace is dumped here. This is good entry point for examining, why PHP things (e. g. WebClient) are slow.

Running CentOS with Newer MySQL Versions (5.5.x and Later)

The easiest (and recommended) way how to run the latest MySQL on IceWarp Linux Server is to use the dev.mysql.com's repository. It is the most effective solution that includes the latest version.

Example for CentOS 6.5

```
wget http://dev.mysql.com/get/mysql-community-release-el6-5.noarch.rpm
rpm -Uvh mysql-community-release-el6-5.noarch.rpm
yum install mysql mysql-server mysql-libs mysql-libs.i686
```

For more information, refer to <http://dev.mysql.com/doc/mysql-repo-excerpt/5.6/en/linux-installation-yum-repo.html>

Another way (used up to now)

IceWarp Server (especially WebClient) was optimized to use the InnoDB engine more efficiently (mostly the use of MySQL engine for WebClient PDO cache). This engine is improved in every MySQL release. Servers should run V5.5.x instead of V5.1.x which is included in repositories.

First, download RPM packages from dev.mysql.com. The list of what you need is as follows:

```
MySQL-server-<version>.<architecture>.rpm
MySQL-shared-compat-<version>.<architecture>.rpm
```

With 64bit builds of IceWarp Server, both `x86_64` and `i686` versions of `mysql-shared-compat` RPM are needed.

Then you need to install those packages. This can be done either by the `rpm` command or with a local repo and `yum`. The first option can be done by issuing a **similar** command as:

```
rpm -ivh MySQL-server-5.6.17-1.el6.x86_64.rpm
```

However, this option has a drawback regarding dependencies. You have to solve them yourself.

The latter option incorporates `yum` and a local repo. The advantage of this solution is that `yum` will handle the installation for you (resolve dependencies or upgrades). For more information about creating a local repo, refer to the [Local Repository Creation](#) chapter (see further).

You may think of using repo REMI instead of creating a local one, but it seems they do not provide 32bit client library (`libmysqlclient.16.so`) that IceWarp Server requires for its php extension. However, any repo offering `MySQL-shared-compat-<version>.i686.rpm` with `libmysqlclient.16.so` included can work.

Anyway, local repo solution provides a possibility to run a newer (or latest) version of MySQL that is offered by REMI or other repos.

If older MySQL instance has been already installed, backup your databases (better safe than sorry) and remove the instance. It may be possible to perform upgrade just by updating your local repo with newer RPMs (this can work for minor version upgrades) and using the `yum` update command. In any case, be ready to remove the current MySQL instance and subsequently install a newer version (expect service outage!).

NOTE: When installing from RPMs downloaded from dev.mysql.com, the service name is **mysql** (not `mysqld`).

If the installation is handled by `yum`, execute the following commands to install server and libraries (otherwise use `rpm -ivh <package_name>`):

```
yum install mysql-server mysql-libs // 32bit OS
yum install mysql-server mysql-libs mysql-libs.i686 // 64bit OS
```

Then make sure the service is started on OS boot:

```
chkconfig --levels 235 mysqld on
```

Start mysql service:

```
service mysqld start // use mysql for dev.mysql.com's rpms
```

Once done, secure mysql installation by running:

```
mysql_secure_installation
```

What to answer in MySQL server hardening process (what you want to happen)?

- set new root password
- remove anonymous users
- disallow root login remotely
- remove test database
- reload privilege tables

Local Repository Creation

Step 1: Install *createrepo*

To create Custom YUM Repository, you need to install additional software called *createrepo* on your cloud server. You can install *createrepo* by running the following command from a console:

```
yum install createrepo
```

Step 2: Create Repository Directory

You need to create a new directory that will be the location of your Custom YUM Repository and will hold the desired RPM package files. Use the following command from a console (choose a different */repository1* directory name if you like):

```
mkdir /repository1
```

Step 3: Put RPM Files to the Repository Directory

If RPM package files are not yet present on your VPS, you need to transfer them to your cloud server via FTP or SSH – use software like WinSCP (free SFTP client and FTP) or similar. You can also download RPM package files directly to your system (internet connection needed) with the *wget* command from a console (change HTTP link accordingly, this is just an example, please):

```
wget http://mirror.lhnidos.org/CentOS/6/os/i386/Packages/NetworkManager-0.8.1-43.el6.i686.rpm
```

If RPM files are already present on your system, you need to copy or move these files to the newly created directory (within *Step 2*). You can move RPM files with the following command from a console (change */path/to/rpm* and */repository1* accordingly, please):

```
mv /path/to/rpm /repository1
```

You can copy RPM files with the following command from a console (change */path/to/rpm* and */repository1* accordingly, please):

```
cp /path/to/rpm /repository1
```

Step 4: Run *createrepo*

The *createrepo* command reads through Custom YUM Repository directory (*Step 2*) and creates a new directory called *repodata* in it. *Repodata* directory holds the metadata information for the newly created repository. Every time You add additional RPM package files to your Custom YUM Repository, you need to re-create Repository metadata with the *createrepo* command. You can create new repository metadata by running the following command from a console (change */repository1* accordingly, please):

```
createrepo /repository1
```

Step 5: Create YUM Repository Configuration File

To start using the newly created Custom YUM Repository, you have to create the corresponding YUM Repository Configuration file with the *.repo* extension, which must be placed to the */etc/yum.repos.d/* directory. Instructions how to create the YUM Repository Configuration file are covered in the **YUM Repository Configuration File** section. Example of the Custom YUM Repository Configuration file: */etc/yum.repos.d/custom.repo*

```
[customrepo]
name=Custom Repository
baseurl=file:///repository1/
enabled=1
gpgcheck=0
```

You do not have to set enabled to **1** especially when you do not intend to have *yum check* the custom repo each time when it is searching for a package. In this use case, run *yum* with an optional parameter `--enablerepo` when you want to have custom repo included in search (i.e. `yum install --enablerepo=customrepo somecoolpackage`).

Upgrading IceWarp Server

1. Download and unpack a new version installation package.
2. Stop previous IceWarp Server. Although the installer allows to kill the server, it is always better to stop it manually (and wait when it is done).
3. Run the **install.sh** file from the unpacked installation package.
4. Follow the screen instructions, they are very similar to fresh installation. When asked, choose to upgrade.
5. At the end, you will be asked whether you want to run upgrade procedures. Answer **yes** in this case. You can also run upgrade procedures later for some reason. Do not use newly installed server before upgrade procedures are finished.

NOTE: The Avast antivirus is available only in the 32bit IceWarp Server version. The Kaspersky antivirus is the default now.

NOTE: When your server license is expired, it is not possible to upgrade. Moreover, services can stop very often (say every hour) in this situation.

Differences between Windows and Linux Versions

Linux version and Windows one are the same feature-to-feature, including:

- LDAP and ActiveDirectory integration
- Avast or Kaspersky Anti-Virus with AutoUpdates
- Commtouch Anti-Spam LIVE engine (ctasd)
- Mail Log Analyzer (see F1 help on how to setup cron job for importerd)
- SQLite3 database engine installed and used by default
- PHP5 with XCache, php_tidy and common libraries
- native support for MySQL, supported version depends on drivers available in distribution's repository. For newer MySQL drivers on CentOS refer to the [Running CentOS with Newer MySQL Versions](#) chapter.
- command line tool with direct access to API and server constants
- the same unified IceWarpServer API library (RPC, PHP, apiobjectcall)
- the documentation applies with some abstraction if using WebAdmin

There are however differences given by the platform architecture:

- Administration GUI is non-native but runs under Wine
- installation script instead of installer wizard
- UnixODBC is required for Oracle and MSSQL with appropriate driver
- Oracle driver is distributed with Oracle server installation
- As MSSQL driver, the driver from FreeTDS project can be used. Support can help with configuration.
- For FireBird, native client libraries (*libgds.so* or *libfbclient.so*, in embedded mode also others, like *libfbembed.so* etc.) have to be available for loading. I.e. they should be in the system lib directory or copied to the IceWarp lib (lib64) directory. Note that for 64bit IceWarp Server version, you need to have both 32bit and 64bit library versions installed.
- FastCGI only, no support for multi-threaded web server mode

Security Enhanced Linux

On some systems (RHEL5 for example), SELinux is enabled and configured by default in a way that prevents IceWarp Server from running at all. Now, the installer displays a warning that admins should either disable SELinux or refer to this guide.

Disabling SELinux

SELinux can be switched into one of these modes:

- **enforcing** – SELinux security policy is enforced
- **permissive** – SELinux prints warnings instead of enforcing
- **disabled** – no SELinux policy is loaded

IceWarp Server works when SELinux is either in disabled or permissive mode. Enforcing mode can be temporarily switched to permissive mode by the following command: `setenforce 0`

To make the change persistent (i.e. to survive reboot), SELinux configuration file needs to be modified. Commonly it is located at `/etc/selinux/config`. Change `SELINUX=` to `disabled` or `permissive` and reboot.

Configuring SELinux to Work with IceWarp Server

Shared libraries included in IceWarp Server need text relocations, which can be forbidden by SELinux. Exceptions for these libraries need to be added to the SELinux configuration. To do it, follow these steps:

1. Switch SELinux to the permissive mode and start IceWarp Server.
2. Run `grep "SELinux is preventing" /var/log/messages`, this will display problematic libraries.
3. Allow text relocations for these libraries executing:

```
chcon -t textrel_shlib_t '<filename>'
semanage fcontext -a -t textrel_shlib_t '<filename>'
```

4. Restart IceWarp Server.
5. Go to 2.

It is necessary to repeat these steps until no new libraries appear. Here is an example list of libraries that need an exception with IceWarp Server 11.2.0.0:

```
chcon -t textrel_shlib_t '/opt/icewarp/modules/libwcs.so'
semanage fcontext -a -t textrel_shlib_t '/opt/icewarp/modules/libwcs.so'
chcon -t textrel_shlib_t '/opt/icewarp/kaspersky/updater/libupdsdk8.so.8.5.0.47'
semanage fcontext -a -t textrel_shlib_t '/opt/icewarp/kaspersky/updater/libupdsdk8.so.8.5.0.47'
chcon -t textrel_shlib_t '/opt/icewarp/modules/libpurple.so'
semanage fcontext -a -t textrel_shlib_t '/opt/icewarp/modules/libpurple.so'
chcon -t textrel_shlib_t '/opt/icewarp/modules/libemail.so'
semanage fcontext -a -t textrel_shlib_t '/opt/icewarp/modules/libemail.so'
chcon -t textrel_shlib_t '/opt/icewarp/modules/libservice.so'
semanage fcontext -a -t textrel_shlib_t '/opt/icewarp/modules/libservice.so'
chcon -t textrel_shlib_t '/opt/icewarp/php/ext/ioncube_loader_lin_5.4.so'
semanage fcontext -a -t textrel_shlib_t '/opt/icewarp/php/ext/ioncube_loader_lin_5.4.so'
chcon -t textrel_shlib_t '/opt/icewarp/php/ext/libicewarpphp.so'
semanage fcontext -a -t textrel_shlib_t '/opt/icewarp/php/ext/libicewarpphp.so'
chcon -t textrel_shlib_t '/opt/icewarp/lib/libapi.so'
```

```
semanage fcontext -a -t textrel_shlib_t '/opt/icewarp/lib/libapi.so'
chcon -t textrel_shlib_t '/opt/icewarp/kaspersky/libkave8.so.8.5.0.42'
semanage fcontext -a -t textrel_shlib_t '/opt/icewarp/kaspersky/libkave8.so.8.5.0.42'
chcon -t textrel_shlib_t '/opt/icewarp/kaspersky/libkavesd.so.8.5.0.42'
semanage fcontext -a -t textrel_shlib_t '/opt/icewarp/kaspersky/libkavesd.so.8.5.0.42'
chcon -t textrel_shlib_t '/opt/icewarp/kaspersky/libipclib.so'
semanage fcontext -a -t textrel_shlib_t '/opt/icewarp/kaspersky/libipclib.so'
chcon -t textrel_shlib_t '/opt/icewarp/kaspersky/libkavessi.so.8.5.0.42'
semanage fcontext -a -t textrel_shlib_t '/opt/icewarp/kaspersky/libkavessi.so.8.5.0.42'
chcon -t textrel_shlib_t '/opt/icewarp/kaspersky/libkavess.so.8.5.0.42'
semanage fcontext -a -t textrel_shlib_t '/opt/icewarp/kaspersky/libkavess.so.8.5.0.42'
chcon -t textrel_shlib_t '/opt/icewarp/kaspersky/ppl/params.ppl'
semanage fcontext -a -t textrel_shlib_t '/opt/icewarp/kaspersky/ppl/params.ppl'
chcon -t textrel_shlib_t '/opt/icewarp/kaspersky/ppl/tm.ppl'
semanage fcontext -a -t textrel_shlib_t '/opt/icewarp/kaspersky/ppl/tm.ppl'
chcon -t textrel_shlib_t '/opt/icewarp/kaspersky/ppl/loader.so'
semanage fcontext -a -t textrel_shlib_t '/opt/icewarp/kaspersky/ppl/loader.so'
chcon -t textrel_shlib_t '/opt/icewarp/kaspersky/ppl/schedule.ppl'
semanage fcontext -a -t textrel_shlib_t '/opt/icewarp/kaspersky/ppl/schedule.ppl'
chcon -t textrel_shlib_t '/opt/icewarp/kaspersky/ppl/regmap.ppl'
semanage fcontext -a -t textrel_shlib_t '/opt/icewarp/kaspersky/ppl/regmap.ppl'
chcon -t textrel_shlib_t '/opt/icewarp/kaspersky/ppl/propmap.ppl'
semanage fcontext -a -t textrel_shlib_t '/opt/icewarp/kaspersky/ppl/propmap.ppl'
chcon -t textrel_shlib_t '/opt/icewarp/kaspersky/ppl/nfio.ppl'
semanage fcontext -a -t textrel_shlib_t '/opt/icewarp/kaspersky/ppl/nfio.ppl'
chcon -t textrel_shlib_t '/opt/icewarp/kaspersky/ppl/libapp_core_legacy.so'
semanage fcontext -a -t textrel_shlib_t '/opt/icewarp/kaspersky/ppl/libapp_core_legacy.so'
chcon -t textrel_shlib_t '/opt/icewarp/kaspersky/ppl/libkl_service.so'
semanage fcontext -a -t textrel_shlib_t '/opt/icewarp/kaspersky/ppl/libkl_service.so'
chcon -t textrel_shlib_t '/opt/icewarp/kaspersky/ppl/libkey_value_storage.so'
semanage fcontext -a -t textrel_shlib_t '/opt/icewarp/kaspersky/ppl/libkey_value_storage.so'
chcon -t textrel_shlib_t '/opt/icewarp/kaspersky/ppl/libupdater_meta.so'
semanage fcontext -a -t textrel_shlib_t '/opt/icewarp/kaspersky/ppl/libupdater_meta.so'
chcon -t textrel_shlib_t '/opt/icewarp/kaspersky/ppl/libcf_server_meta.so'
semanage fcontext -a -t textrel_shlib_t '/opt/icewarp/kaspersky/ppl/libcf_server_meta.so'
chcon -t textrel_shlib_t '/opt/icewarp/kaspersky/ppl/libam_meta.so'
semanage fcontext -a -t textrel_shlib_t '/opt/icewarp/kaspersky/ppl/libam_meta.so'
chcon -t textrel_shlib_t '/opt/icewarp/kaspersky/ppl/libapp_core_meta.so'
semanage fcontext -a -t textrel_shlib_t '/opt/icewarp/kaspersky/ppl/libapp_core_meta.so'
chcon -t textrel_shlib_t '/opt/icewarp/kaspersky/ppl/libinstrumental_services.so'
semanage fcontext -a -t textrel_shlib_t '/opt/icewarp/kaspersky/ppl/libinstrumental_services.so'
chcon -t textrel_shlib_t '/opt/icewarp/kaspersky/ppl/libksn_meta.so'
```



```
semanage fcontext -a -t textrel_shlib_t '/opt/icewarp/kaspersky/ppl/libksn_meta.so'  
chcon -t textrel_shlib_t '/opt/icewarp/kaspersky/ppl/libstorage.so'  
semanage fcontext -a -t textrel_shlib_t '/opt/icewarp/kaspersky/ppl/libstorage.so'  
chcon -t textrel_shlib_t '/opt/icewarp/kaspersky/ppl/libupdate_adaptor.so'  
semanage fcontext -a -t textrel_shlib_t '/opt/icewarp/kaspersky/ppl/libupdate_adaptor.so'  
chcon -t textrel_shlib_t '/opt/icewarp/kaspersky/ppl/libavs_eka.so'  
semanage fcontext -a -t textrel_shlib_t '/opt/icewarp/kaspersky/ppl/libavs_eka.so'  
chcon -t textrel_shlib_t '/opt/icewarp/kaspersky/ppl/libthreats_disinfection.so'  
semanage fcontext -a -t textrel_shlib_t '/opt/icewarp/kaspersky/ppl/libthreats_disinfection.so'  
chcon -t textrel_shlib_t '/opt/icewarp/kaspersky/ppl/libksn_facade.so'  
semanage fcontext -a -t textrel_shlib_t '/opt/icewarp/kaspersky/ppl/libksn_facade.so'  
chcon -t textrel_shlib_t '/opt/icewarp/kaspersky/ppl/libmd5_cache.so'  
semanage fcontext -a -t textrel_shlib_t '/opt/icewarp/kaspersky/ppl/libmd5_cache.so'  
chcon -t textrel_shlib_t '/opt/icewarp/kaspersky/updater/libupdater.so'  
semanage fcontext -a -t textrel_shlib_t '/opt/icewarp/kaspersky/updater/libupdater.so'
```

This list can be used as a template, however it depends on enabled services, server bitness and AntiVirus version.

Miscellaneous

Document Preview

Document conversion services performed by **libreoffice** (various document types → PDF) are not available on RHEL5 and DEB6 (support for DEB6 ended with 11.4.0.0 release).

PDF to image is available

On Linux document preview image is generated using ghostscript by default. It can be switched to libreoffice. To switch it, administrators needs to write **libreoffice** binary name (or path, when it is needed) to `{}_C_System_LibreOfficeBinary` API variable.

Note, that libreoffice 5.0 or above is needed to successfully convert the document to image. It is admin responsibility to set libreoffice binary variable to version that is high enough.

How to Uninstall

If you want to uninstall IceWarp Server, use the **uninstall.sh** file, that is placed in the `<install_dir>/` folder.